

De-novo genome assembly of the invasive mosquito species *Aedes japonicus* and *Aedes koreicus*

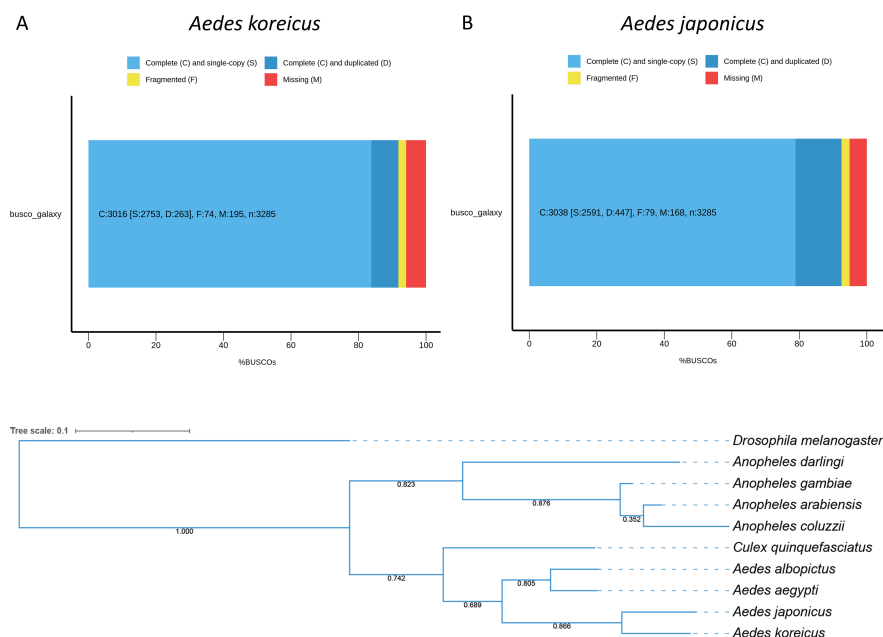
Paolo Ctapano¹, Monica Falcinelli¹, Claudia Damiani¹, Alessia Cappelli¹, Despoina Koukoulis¹, Paolo Rossi¹, Irene Ricci¹, Valerio Napolioni¹, and Guido Favia¹

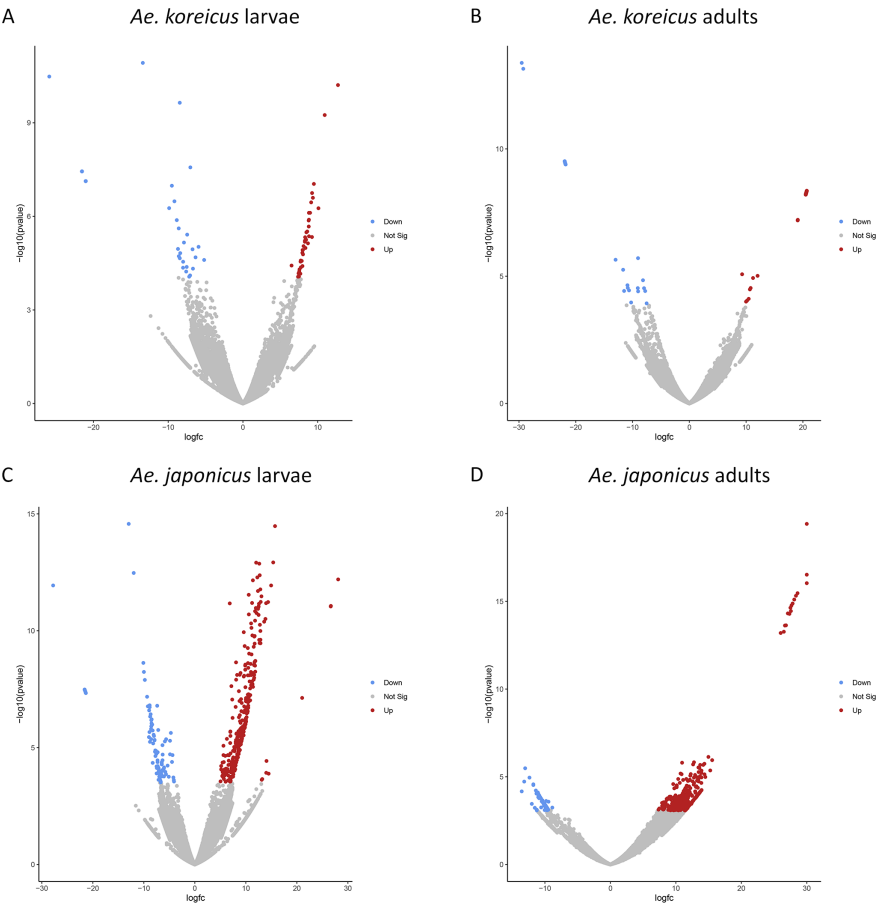
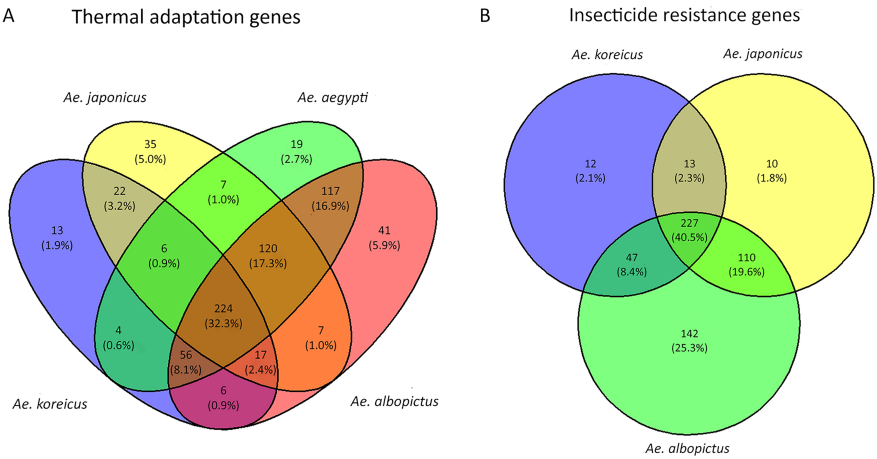
¹University of Camerino

May 26, 2023

Abstract

Recently, two invasive *Aedes* mosquito species, *Ae. japonicus* and *Ae. koreicus*, are circulating in several European countries posing potential health risks to humans and animals. Vector control is the main option to prevent mosquito-borne diseases, and an accurate genome sequence of these mosquitoes is essential to better understand their biology and to develop effective control strategies. Here, we present a de novo genome assembly of the *Ae. japonicus* (Ajap1) and *Ae. koreicus* (Akor1) based on a hybrid approach that combines Oxford Nanopore long reads and Illumina short reads data. Their quality was ascertained using various metrics. Masking of repetitive elements, gene prediction and functional annotation was performed. Sequence analysis revealed a very high presence of repetitive DNA and, among others, thermal adaptation genes and insecticide-resistance genes. Through the RNAseq analysis of larvae and adults of *Ae. koreicus* and *Ae. japonicus* exposed to different temperatures (15 and 28°C) we also identified genes showing a differential temperature-dependent activation. The assembly of Akor1 and Ajap1 genomes constitutes the first updated collective knowledge of the genomes of both mosquito species, providing the possibility of understanding key mechanisms of their biology such as the ability to adapt to harsh climates and to develop insecticide-resistance mechanisms.





De-novo genome assembly of the invasive mosquito species *Aedes japonicus* and *Aedes koreicus*

Paolo L. Catapano^{1,a}, Monica Falcinelli^{1,a}, Claudia Damiani², Alessia Cappelli², Despoina Koukouli¹, Paolo Rossi¹, Irene Ricci², Valerio Napolioni¹, Guido Favia^{2*}

¹School of Biosciences and Veterinary Medicine, University of Camerino, Via Gentile III da Varano, 62032 Camerino, Italy

²School of Biosciences and Veterinary Medicine, University of Camerino, CIRM Italian Malaria Network, Via Gentile III da Varano, 62032 Camerino, Italy

^aPaolo Catapano and Monica Falcinelli have been equally contributed to this work.

*Guido Favia

Email: guido.favia@unicam.it

Author Contributions: G. Favia designed the research; P. Catapano, M. Falcinelli, C. Damiani, A. Cappelli performed research; D. Koukouli, P. Rossi, I. Ricci contributed new analytic tools; P. Catapano, M. Falcinelli, C. Damiani, A. Cappelli, V. Napolioni, G. Favia analyzed data; C. Damiani, V. Napolioni, G. Favia wrote the paper.

Competing Interest Statement: The authors declare that they have no competing interests.

Data accessibility statement: All the data that support the genome assembly and RNA analysis of *Ae. koreicus* and *Ae. japonicus* have been deposited in the NCBI and can be accessed with BioProject accession numbers:

PRJNA947548(<https://dataview.ncbi.nlm.nih.gov/object/PRJNA947548?reviewer=vluhmg7o407263tdhui37m0u56>) and

PRJNA947978(<https://dataview.ncbi.nlm.nih.gov/object/PRJNA947978?reviewer=jsp2muuuu89t76qt9tds28kn1b>), respectively.

Running title: Genome assembly of invasive mosquito species

Keywords: Aedine; Assembly; Genome; Insecticide resistance; Thermal Stress.

Abstract

Recently, two invasive *Aedes* mosquito species, *Ae. japonicus* and *Ae. koreicus*, are circulating in several European countries posing potential health risks to humans and animals. Vector control is the main option to prevent mosquito-borne diseases, and an accurate genome sequence of these mosquitoes is essential to better understand their biology and to develop effective control strategies. Here, we present a de novo genome assembly of the *Ae. japonicus* (Ajap1) and *Ae. koreicus* (Akor1) based on a hybrid approach that combines Oxford Nanopore long reads and Illumina short reads data. Their quality was ascertained using various metrics. Masking of repetitive elements, gene prediction and functional annotation was performed. Sequence analysis revealed a very high presence of repetitive DNA and, among others, thermal adaptation genes and insecticide-resistance genes. Through the RNAseq analysis of larvae and adults of *Ae. koreicus* and *Ae. japonicus* exposed to different temperatures (15 and 28°C) we also identified genes showing a differential temperature-dependent activation. The assembly of Akor1 and Ajap1 genomes constitutes the first updated collective knowledge of the genomes of both mosquito species, providing the possibility of understanding key mechanisms of their biology such as the ability to adapt to harsh climates and to develop insecticide-resistance mechanisms.

Main Text

Introduction

In the early nineties, Europe experienced the colonisation of vast continental areas by the *Aedes albopictus* mosquito (1). This mosquito of non-European origin is now permanently resident in the continent, and it has been the protagonist of some viral epidemics as vector of numerous arboviruses and heartworms, such as Chikungunya, Zika, Dengue and filariasis (1). Also, the sudden spread in Africa of *Anopheles stephensi*, a major Asian malaria vector, is generating outbreaks even in those areas where malaria was almost eradicated (2, 3). Being adapted to urban life, *An. stephensi* has the potential to further spread to many urban areas across the African continent, implying an increased number of people at risk of malaria (4). Conceivably, climate change may influence the adaptation of other invasive species to new environmental niches, thus colonising new areas and rapidly spreading to others. In this frame, the appearance in Europe of two *Aedes* invasive species, namely *Ae. japonicus* and *Ae. koreicus*, is not surprising. The first European advent of *Ae. japonicus* is dated 2000, in France (5), while *Ae. koreicus* was reported in Belgium during the 2008 (6). Since then, established populations of *Ae. japonicus* were detected in Belgium, Germany, Switzerland, Austria, Slovenia, Croatia, the Netherlands, Italy, Hungary, Luxembourg, and Northern Spain. *Ae. koreicus* is well established in Italy, Germany, Russia and Hungary and it was also found in Slovenia and Switzerland (7). Moreover, *Ae. koreicus* has been passively spreading along the European route E35 from Italy to Germany while *Ae. japonicus* has been expanding through active dispersal (8). Thus, both species show a remarkable ability to adapt to different eco-environmental and climate conditions. Nevertheless, despite their potential role in the transmission of endemic and imported pathogens, not much is known about their real vectorial capacity and their ability to adapt to specific environmental conditions and eco-ethological contexts. To understand the basic biology of these species, more research is needed, given the possible development of control strategies. These assumptions prompted us to conduct a study aimed at

sequencing the genome of these two invasive species, with a special focus to gene clusters of peculiar interest such as those responsible for insecticide resistance and thermal adaptation.

Results

Genome length and GC content

Using a hybrid approach that combines Oxford Nanopore long reads and Illumina short reads data, we assembled a scaffold-level version of *Ae. koreicus* and *Ae. japonicus* genomes which length has been assessed 1.24 and 1.39 Gigabase (Gb) pairs, respectively. These dimensions resemble those of other aedine such as *Ae. aegypti* and *Ae. albopictus*, which are estimated to be respectively 1.22 (9) and 1.19-1.28 Gb pairs (10, 11). The GC content of the two genomes is very similar: 39.68% in *Ae. koreicus* while 39.51% in *Ae. japonicus*. Again, these metrics are comparable to those of *Ae. aegypti* (38.3%) and *Ae. albopictus* (40.4%). Genome completeness of the two species, measured using BUSCO (Benchmarking Universal Single-Copy Orthologs) (11), showed for *Ae. koreicus* a gene completeness of 91.8%, and 8% of duplicates, while for *Ae. japonicus*, it showed 92.5% gene completeness and 13.6% duplicates. Genome annotation yielded 18,647 and 18,687 genes for *Ae. koreicus* and *Ae. japonicus*, respectively. The N50 values are 190,716 for *Ae. koreicus* and 118,241 for *Ae. japonicus* (**Figure 1, Table1**). Repeatmasker detected 71% and 71.92% of the *Ae. japonicus* and *Ae. koreicus* genome, respectively, as repetitive DNA.

Phylogenetic analysis

The phylogenetic analysis was based on the comparison between the predicted proteomes of *Ae. koreicus* and *Ae. japonicus* and the proteomes of seven mosquito species belonging to three different genera (*Anopheles gambiae*, *Anopheles coluzzii*, *Anopheles arabiensis*, *Anopheles darlingi*, *Aedes aegypti*, *Aedes albopictus* and *Culex quinquefasciatus*). As expected, phylogenetic clustering revealed two main Clades. Clade I contains the four *Anopheles* species while Clade II contains the four *Aedes* species and *Cx. quinquefasciatus*. Notably, the phylogenetic tree showed that the new invasive species, *Ae. koreicus* and *Ae. japonicus*, share a most common recent ancestor (MCRA). It is worth noting that the MCRA of *Ae. koreicus* and *Ae. japonicus* diverged more recently compared to the MCRA of *Ae. aegypti* and *Ae. albopictus* (**Figure 2**).

Annotation of specific genes

Among the several different classes of genes, particular attention has been devoted to two specific classes of genes: the ones involved in thermal adaptation and those involved in insecticide resistance.

Thermal adaptation genes

The comparative analysis of genes involved in thermal stress between the two invasive species was extended also to *Ae. albopictus* and *Ae. aegypti*, using *Drosophila melanogaster* as reference organism (12). Indeed, out of 694 selected genes in *Drosophila*, we have identified 348 homologous genes in *Ae. koreicus* (**Dataset S1-A**) and 438 genes in *Ae. japonicus* (**Dataset S1-B**). Of these, 13 are specific to *Ae. koreicus* (**Dataset S1-C**) and 35 to *Ae. japonicus* (**Dataset S1-D**). Additional 22 genes are shared between these two species but not with *Ae. aegypti* and *Ae. albopictus* (**Dataset S1-D**) (**Figure 3A**). Particularly, the 13 specific genes of *Ae. koreicus* are enriched in KEGG pathways involved in Pentose phosphate pathway, Fructose, mannose, galactose metabolism, Neuroactive ligand-receptor interaction, RNA degradation and Glycolysis/Gluconeogenesis (**Dataset S2-A**). The 35 specific genes of *Ae. japonicus* are enriched in KEGG pathways such as Glycerophospholipid metabolism and Aminoacyl-tRNA biosynthesis (**Dataset S2-B**). The 22 genes shared between these two species were enriched for KEGG pathways involved in Tryptophan, Phenylalanine, Tyrosine and Pyruvate metabolism (**Dataset S2-C**).

Insecticide resistance genes

The comparative analysis of genes involved in insecticide resistance between the two invasive species extended also to *Ae. albopictus* using *Ae. aegypti* as reference organism (13). Out of 561 genes, we have identified 299 genes in *Ae. koreicus* (**Dataset S3-A**) and 360 genes in *Ae.*

japonicus (**Dataset S3-B**). Of these 12 are specific to *Ae. koreicus* and 10 to *Ae. japonicus* (**Dataset S3-C and D** respectively). An additional 13 are shared between these two species but not with *Ae. albopictus* (**Dataset S3-E**) (**Figure 3B**). All these genes belong to gene families known to be involved in lower insecticide penetration, sequestration, and biodegradation: genes encoding for detoxification enzymes (P450, CCEs, GSTs, UGTs), cuticle proteins, ATP-binding cassette (ABC) transporters, neurotransmitter receptors, and voltage-gated channels. All three species share most of these families, nevertheless the differential distribution of members of the individual families characterizes the relative composition and quantities. More in detail: 4 out of 12 of the specific genes of *Ae. koreicus* belong to “cuticle gene family” (Chitin synthase, Pupal cuticle protein putative, Pupal cuticle protein E78 putative, Cuticle protein putative), 3 to “ion channel gene family” (Sodium leak channel non-selective protein, Voltage-dependent L-type calcium channel subunit alpha, Voltage-gated potassium channel), 2 to “ABC transporter gene family” (ATP-binding cassette sub-family A member 3, multidrug resistance protein 2/ATP-binding cassette protein c), while 2 were classified as “other detox genes” (Short-chain dehydrogenase) and one more as “other gene” (Modifier of *mdg4*).

In *Ae. japonicus* we specifically identified: one member of the “ABC transporter family” (Multidrug resistance protein 2/ATP-binding cassette protein c); one member of the “cuticle family” (Pupal cuticle protein, putative), two are ion channels (Voltage-gated potassium channel, Glutamate-gated chloride channel), two P450 gene (Cytochrome P450) and the last four remaining genes were categorized three as “other detox” (Sterol desaturase, NAD(P)H oxidase (H₂O₂)-forming, Oxidoreductase) and one as “other” (BTB domain-containing protein). Thirteen genes are specifically shared only by *Ae. koreicus* and *Ae. japonicus*; one is an ABC transporter (ABC transporter), three belong to cuticle family (Brain chitinase and chia, Chitin synthase, Pupal cuticle protein putative), two are ion channels (Voltage-dependent L-type calcium channel subunit alpha), one is a P450 gene (Cytochrome P450). Finally, 3 out of 13 shared genes are synaptic receptors (Nicotinic acetylcholine receptor, putative, Nicotinic acetylcholine receptor beta-2 subunit putative), two are oxidoreductase (Heme peroxidase, Thioredoxin reductase) and one belong to the “other detox” family (Sterol desaturase).

RNAseq analysis of thermal adaptation genes

Through the RNAseq analysis of larvae and adults of *Ae. koreicus* and *Ae. japonicus* exposed to different temperatures (15 and 28°C) we identified genes showing a differential temperature-dependent activation (**Figure 4**). In detail, under the low-temperature stress of 15°C several genes were differentially expressed, and the relative encoded proteins identified: in *Ae. koreicus* larvae (**Dataset S4-A**), out of 57 upregulated and 40 downregulated transcripts, we identified 8 upregulated and 4 downregulated proteins. In adults, among 225 upregulated and 26 downregulated transcripts, we identified 27 upregulated and 2 downregulated proteins (**Dataset S4-B**). Larvae and adults share only one upregulated gene (*aef1*, adult enhancer factor 1) but none of the downregulated (Table 2). In *Ae. japonicus* larvae, out of 325 upregulated and 101 downregulated transcripts, we identified 373 upregulated and 14 downregulated proteins (**Dataset S4-C**). In adults, among 502 upregulated and 79 downregulated transcripts, we identified 70 upregulated and 24 downregulated proteins (**Dataset S4-D**). Larvae and adults share 18 upregulated genes and 3 of the downregulated (Table 2). Functional GO terms were enriched in 8 Molecular functions, 1 Cellular component in larvae of *Ae. koreicus* while 2 Molecular functions in adults. Instead in *Ae. japonicus* larvae 3 Biological Processes and 1 Molecular function are enriched, while no enrichment was present in adults of *Ae. japonicus* (**Table S1**). Notably, several differentially expressed genes seem strongly involved in thermal adaptation as they plausibly encode for specific proteins: in larvae of *Ae. koreicus*, among others of interest, we found upregulated genes encoding for Alanine/Arginine aminopeptidase (up-regulated also in adults), Acyl-CoA desaturase and Serine carboxypeptidase. Aminopeptidase activities are detected in the midgut of mosquitoes both in larvae and adults (14). The role of alanine aminopeptidase and more in general of aminopeptidase in thermal adaptation has been reported in different biological systems. In striped hamsters acclimated to cold (5°C), alanine aminopeptidase activity was higher than in those exposed to hot temperatures (31°C) (15), while it is well known that psychrophilic

marine bacteria produce a cold-adapted aminopeptidase (16). Concerning Acyl-CoA desaturase, a very large evidence is on its involvement in cold adaptation processes: in the winged midge *Parochlus steinenii*, the extended acyl-CoA delta desaturase gene family underwent gene family expansion via multiple gene duplications for adaptation to the cold environments (17); in *Drosophila* and in Lepidoptera, the specific expression of some desaturases modulates cold adaptation mechanisms (18, 19). Serine carboxypeptidases are expressed in mud crabs in response to cold exposition (20).

In adults of *Ae. koreicus*, among many other genes likely involved in thermal regulation, we found up-regulated genes encoding for Cytochrome P450, Fatty acyl-CoA reductase, and Mitochondrial adenine nucleotide transporter/translocase. Insect's cytochrome P450 is well known to be involved in tolerance mechanisms (21, 22) and in some insects, as the *Crysomelidae* *Galeurca daurica*, is upregulated together with a Fatty acyl-CoA reductase during recovery from cold stress (23). Mitochondrial adenine nucleotide transporter/translocase has roles in thermal adaptation in several organisms as for example in thermal acclimation in the rainbow trout *Oncorhynchus mykiss* (24), or in response to thermal stress in *Apostichopus japonicus* (25).

Among the genes downregulated in larvae of *Ae. koreicus*, after exposure to 4°C, we found a gene encoding a 5'-AMP-activated protein kinase (catalytic subunit alpha-2); interestingly activation of an AMP-activated protein kinase in response to temperature elevation has been reported in the zebra mussel, *Dreissena polymorpha* (26).

Two genes were found downregulated in adults of *Ae. koreicus* when exposed to cold conditions: an Acetyl-CoA carboxylase (*acc*) and a Steroid receptor seven-up, isoform A. *acc* is reported to have a role in thermal adaptation in sheep, more precisely its activity seems depressed in tissues exposed to cold (27). The Steroid receptor seven-up is involved in *Drosophila* oogenesis, thus influencing final egg output (28).

In *Ae. japonicus* larvae, among the many up-regulated genes, plausibly involved in the mechanisms of cold adaptation after exposure to 15°C, there are some common to those previously described in *Ae. koreicus* (e.g., Cytochrome P450). Among the many others of interest are those encoding some dehydrogenases (both alcohol and 6-phosphogluconate dehydrogenase), a multicopper oxidase, a glycosyl hydrolase and helicases. Indeed, in *Bactrocera dorsalis* low-temperature stress induced higher alcohol dehydrogenase activities in different life developmental stages with higher increase intensity in adults and pupae than in larvae (29). 6-phosphogluconate dehydrogenase it is known to play a role in increasing cold tolerance in some plants (30, 31). Multicopper oxidases as well are involved in mechanisms of cold tolerance in different organisms as plant and microbes (32, 33), while glycosyl hydrolases contribute to cold adaptation in many different organisms ranging from many plants to some yeasts up to the Antarctic springtail (34). Some members of the helicase family behave similarly with different plants and algae (35, 36).

In adults of *Ae. japonicus*, among the many genes up-regulated after exposure to 15°C, we should mention the members of the Cytochrome P450 and Acyl-CoA desaturase families which role in cold adaptation has already been described (37). Moreover, genes of the Actin family, that in *Culex pipiens* are known to be expressed from early diapause to late diapause and in young non-diapaused adult mosquitoes reared at 18°C (38), were found up-regulated, as well as members of Mitochondrial carriers and members of the Methyltransferase superfamily. Interestingly in some tick's species, DNA methyltransferase are known to contribute to cold tolerance (39). Other genes found up-regulated are members of the aminotransferase family that, as shown in Corn Borer *Ostrinia nubilalis*, during diapause and cold hardening catalyse the production of L-alanine, an important cryoprotectant (40).

In both *Ae. japonicus* larvae and adults the gene encoding the adult enhancing factor 1 (*aef1*) was found down regulated after exposure to 15 °C. Among other functions, this factor has been shown to bind the alcohol dehydrogenase adult enhancer site (AAE) thus regulating its transcription (41). In adults, as already seen in *Ae. koreicus*, a gene encoding a 5'-AMP-activated protein kinase catalytic sub-unit alpha was also downregulated when exposed to cold.

Discussion

Mosquito invasive species, having the potential to transmit a range of different pathogens, pose significant public health problems where they establish, and their ranges and potential impacts are shifting with climate change. This is well demonstrated by the thirty-year experience on the stabilization of *Ae. albopictus* in Europe and, more recently, on the impact of the transmission of urban malaria in relation to the arrival of *An. stephensi* in Africa (2). Although some information about genome organization has been very partially provided for *Ae. koreicus* (42), a more detailed knowledge of the basic biology of the new European invasive species *Ae. koreicus* and *Ae. japonicus* is a fundamental prerequisite to control these insect vectors. Hence, genome sequencing of both species may provide insight into the genetics basis of their competence for pathogens transmission and for the development of species-specific control methods.

Both species are characterized by a genome size and GC content comparable to other aedines genomes (*Ae. albopictus* and *Ae. aegypti*). Nevertheless, the two species are phylogenetically strictly correlated in respect to all the other mosquito species taken in consideration. This suggests common mechanisms of adaptation to eco-ethological contexts and could explain their almost contemporary appearance in large areas of Mediterranean and central Europe.

Consequently, forecasting changes expanding the regions that are suitable to invasion of *Aedes* vectors and *Aedes*-borne viruses, with regards to dengue, chikungunya, and Zika, is a key element of public health preparedness. Moreover, the insecticide resistance developed by several mosquito vectors are undermining the effectiveness of their control. Thus, we focused on those genes implicated in both thermal adaptation and insecticide resistance. The analysis of both group of genes revealed some intriguing features. Both *Ae. koreicus* and *Ae. japonicus* are characterized by species-specific set of genes as well as genes that are shared between these two species but not by other aedines. Considering the function(s) of the proteins encoded by these genes (e.g., decarboxylases) it is very likely that most, if not all, of these genes drive the specific behavior of the two mosquito species in climatic adaptation and insecticide resistance. This is further substantiated by the RNA-seq analysis following exposure of larvae and adults to different temperatures. Indeed, as reported in the results, the expression of several genes has shown to be strongly modulated by the temperature and some of these genes would seem to be involved in the adaptation to low temperatures and could, consequently, contribute on the one hand to a better understanding of the mechanisms underlying the geographical distributions of the two invasive species, on the other to better monitor and control the dispersion of the two species. The ability to monitor and control vector mosquitoes is also supported by the ability to use insecticides and biocides wisely in relation to the possible onset of insecticide-resistance. In this frame, the identification of genes plausibly involved in possible insecticide resistance mechanisms (e.g., Chitin synthases), can represent an excellent basis on which to build further monitoring and control programs.

Ultimately, despite the need for future corroborating studies, the sequencing of the two genomes and the analysis of the two selected groups of genes pave the way to the possibility of specific control strategies aimed to limit the risks associated with the recent introduction of the two invasive species in Europe.

Materials and Methods

Collection of Samples

Larvae of *Ae. koreicus* and *Ae. japonicus* were collected in two villages situated in Veneto region (North-east Italy), Alano di Piave (45°54'26" N, 11°54'28" E), and Feltre (46°0'49.903"N 11°53'49.996"E) respectively. Larvae were mainly collected from artificial containers by dipping and delivered to the insectary of Camerino University. Four instar larvae were morphologically identified according to Montarsi et al., 2013 (43). The DNAs of newly emerged adults were used for the genome analysis. The RNA of four instar larvae and adults were used for the RNA sequencing analysis.

Total genomic DNA were obtained from pools of three females of *Ae. koreicus* and *Ae. japonicus*. DNA was extracted using a JetFlex Genomic DNA Purification kit (Invitrogen, Thermo Fisher Scientific, Waltham, MA, USA) according to the manufacturer's instructions.

For the RNA seq analysis samples were prepared from two different cohorts of adults and four instar larvae *Ae. koreicus* and *Ae. japonicus* reared at 15°C and 28°C respectively. Total RNAs were extracted from single adult and pool of five four instar larvae using RNAzol reagent (Sigma-Aldrich USA), according to the manufacturer's instructions.

Sequencing

Samples of *Ae. koreicus* and *Ae. japonicus* were sent to IGAtch (Udine, Italy) for short and long read sequencing. Briefly, for short read sequencing: Celero™ DNA-Seq kit (NuGEN, San Carlos, CA) has been used for library preparation following the manufacturer's instructions and was sequenced with NovaSeq 6000 in paired-end 150 bp mode. Long read sequencing was performed with Oxford Nanopore PromethION. The samples were prepared using the kit SQK-LSK109 and sequenced on a flowcell R9.4.1. Basecalling of data was performed with Guppy 5.0.13. Reads were filtered with minimum qscore of 7 and length of 500.

For RNA-seq sequencing, Universal Plus mRNA-Seq kit (Tecan Genomics, Redwood City, CA) has been used for library preparation. Libraries were then prepared for sequencing and sequenced on paired-end 150 bp mode on NovaSeq 6000 (Illumina, San Diego, CA).

The total reads count generated by NovaSeq 6000, and Oxford Nanopore PromethION are reported in the (**Dataset S5-A and B**).

Assembly

The Illumina reads were error-corrected using BFC release 181 (44). The Nanopore reads were error-corrected using LoRDEC v0.9 (45) with the error-corrected Illumina overlapping Paired-End (PE) reads, a k-mer size of 19 and a solidity threshold of 3. A first assembly was performed using FLYE 2.9.1 (46) with the long raw Oxford Nanopore reads. The resulting assembly was polished using two rounds of HyPo v1.0.3 (47) with the error-corrected Illumina overlapping PE reads. Scaffolding was then performed with two rounds of LINKS v2.0.1(48) and ntLINKS v1.3.4 (49) using the gap-filling option and with the error-corrected Illumina PE and Nanopore libraries. An additional round of HyPo, as previously described, was performed. We removed haplotig contamination by using "purged dups (50) to produce the final assembly. The assembly quality was assessed by computing two metrics: QUAST v5.0.2 (51) and BUSCO v4.0.5 (11), using as the lineage Diptera.

RNA-seq analysis

Adapter sequences and low-quality bases were trimmed (Trimmomatic) (52) and quality checks before and after trimming were performed (Fastqc) (53). De novo Assemblies were done with SPAdes (54), for RNA. Quality of assemblies was assessed with BUSCO (11) and QUAST (51). Error-corrected reads were mapped to transcripts and read count was performed with SALMON (55). Read count files were then used to compare gene expression of two groups, cold (15°C) and hot (28°C) using DESeq2 pipeline in RStudio (56). We performed transcript annotation using Trinotate pipeline (57). Gene ontology and functional annotation was done with UniProt (58) and Enrichr (59).

Annotation

The automatic annotation of the genome was performed using the MAKER pipeline (60). We provided MAKER data with RNA-seq data of *Ae. koreicus* and *Ae. japonicus* sequenced by our lab and additional ESTs and RNA-seq data from similar mosquito species such as *Ae. aegypti*, *Ae. albopictus*, *Cx. quinquefasciatus* that were publicly available. To predict gene models SNAP (61) and Augustus (62) within MAKER were used. To detect repetitive elements in the genomes, we used RepeatMasker (63). Functional annotation was performed with the InterProScan 5 Pipeline (64).

Phylogenetic analysis

Comparative genomic analysis was performed with the Orthofinder Pipeline (65). The two new assemblies of *Ae. koreicus* and *Ae. japonicus* were compared with mosquito genomes previously assembled like *Ae. aegypti*, *Ae. albopictus*, *Cx. quinquefasciatus*, *An. gambiae*, *An. coluzzii*, *An. arabiensis*, *An. darlingi* and using *D. melanogaster* genome as an outgroup. The phylogenetic tree graph was modified using iTOL v6 (66).

Detection of cold tolerance genes and insecticide resistance genes in the new assemblies

For the detection of the cold tolerance genes, protein sequences of genes found to be differentially expressed in *D. melanogaster* at cold temperatures compared to warmer temperatures (12) were mapped with TBLASTN (67) to the assemblies of *Ae. koreicus*, *Ae. japonicus*, *Ae. albopictus* and *Ae. aegypti*. We filtered results based on hit scoring (>200), and in the case of multiple hits in the same genomic location, only the hit with the highest score was maintained. To find the genes specific to the different mosquito species, we compared the results and built Venn diagrams with RStudio. Functional annotation enrichment analysis was performed with Flyenrichr (59).

For the detection of insecticide resistance genes in the new assemblies, we mapped the protein sequences of 751 metabolic insecticide resistance genes of *Ae. aegypti* (13) using TBLASTN (67), against the assemblies of *Ae. koreicus*, *Ae. japonicus* and *Ae. albopictus*. We filtered results based on hit scoring (>200), and in the case two hits occurred in the same genomic location, we kept the hit with the highest score. We then compared results between species to detect genes specific to *Ae. koreicus* and *Ae. japonicus* and not present in *Ae. albopictus*. Venn diagrams were built with RStudio.

Acknowledgments

We would like to thank Silvia Sorana, Mahdokht Ilbeigi and Sofia Di Castri for the help in mosquito maintenance.

This work was supported by a grant from the University of Camerino (FAR 2019) to Guido Favia.

References

1. <https://www.ecdc.europa.eu/en/disease-vectors/facts/mosquito-factsheets/aedes-albopictus> (
2. G. Vogel, Invasive mosquito adds to Africa's malaria toll. *Science* **378**, 582-583 (2022).
3. M. K. Faulde, L. M. Rueda, B. A. Khairah, First record of the Asian malaria vector *Anopheles stephensi* and its possible role in the resurgence of malaria in Djibouti, Horn of Africa. *Acta Trop* **139**, 39-43 (2014).
4. El-Said, Spread of city-loving malaria mosquitoes could pose grave threat to Africa. *Science* (2020).
5. F. Schaffner, S. Chouin, J. Guilloteau, First record of *Ochlerotatus* (Finlaya) *japonicus japonicus* (Theobald, 1901) in metropolitan France. *J Am Mosq Control Assoc* **19**, 1-5 (2003).
6. V. Versteirt *et al.*, Bionomics of the established exotic mosquito species *Aedes koreicus* in Belgium, Europe. *J Med Entomol* **49**, 1226-1232 (2012).
7. S. Cebrián-Camisón, J. Martínez-de la Puente, J. Figuerola, A Literature Review of Host Feeding Patterns of Invasive. *Insects* **11** (2020).
8. P. Müller *et al.*, Surveillance of invasive *Aedes* mosquitoes along Swiss traffic axes reveals different dispersal modes for *Aedes albopictus* and *Ae. japonicus*. *PLoS Negl Trop Dis* **14**, e0008705. (2020).
9. B. J. Matthews *et al.*, Improved reference genome of *Aedes aegypti* informs arbovirus vector control. *Nature* **563**, 501-507 (2018).
10. U. Palatini *et al.*, Improved reference genome of the arboviral vector *Aedes albopictus*. *Genome Biol* **21**, 215 (2020).

11. M. Manni, M. R. Berkeley, M. Seppey, E. M. Zdobnov, BUSCO: Assessing Genomic Data Quality and Beyond. *Curr Protoc* **1**, e323 (2021).
12. M. Herrmann, L. Y. Yampolsky, False and true positives in arthropod thermal adaptation candidate gene lists. *Genetica* **149**, 143-153 (2021).
13. F. Faucon *et al.*, Identifying genomic changes associated with insecticide resistance in the dengue mosquito *Aedes aegypti* by deep targeted sequencing. *Genome Res* **25**, 1347-1359 (2015).
14. R. Jakhar, S. Gakhar, Study and comparison of mosquito (Diptera) aminopeptidase N protein with other order of insects. *International journal of Mosquito Research* (2019).
15. Z. J. Zhao *et al.*, The shift of thermoneutral zone in striped hamster acclimated to different temperatures. *PLoS One* **9**, e84396 (2014).
16. A. L. Huston, J. Z. Haeggström, G. Feller, Cold adaptation of enzymes: structural, kinetic and microcalorimetric characterizations of an aminopeptidase from the Arctic psychrophile *Colwellia psychrerythraea* and of human leukotriene A(4) hydrolase. *Biochim Biophys Acta* **1784**, 1865-1872 (2008).
17. H. Kim *et al.*, Gene family expansions in Antarctic winged midge as a strategy for adaptation to cold environments. *Sci Rep* **12**, 18263 (2022).
18. T. Suito *et al.*, Functional expression of $\Delta 12$ fatty acid desaturase modulates thermoregulatory behaviour in *Drosophila*. *Sci Rep* **10**, 11798 (2020).
19. Q. Min *et al.*, Differential expression patterns of two delta-9-acyl-CoA desaturases in. *Ecol Evol* **7**, 1909-1918 (2017).
20. J. Chen, T. Leng, Y. M. Jiang, X. B. Chen, Z. M. Liu, RNA-seq analysis of the differential response to low-temperature stress in two morphs of mud crabs (*Scylla paramamosain*). *Comp Biochem Physiol Part D Genomics Proteomics* **43**, 101010 (2022).
21. K. Franke *et al.*, Effects of adult temperature on gene expression in a butterfly: identifying pathways associated with thermal acclimation. *BMC Evol Biol* **19**, 32 (2019).
22. H. J. Huang *et al.*, Comparative analysis of the transcriptional responses to low and high temperatures in three rice planthopper species. *Mol Ecol* **26**, 2726-2737 (2017).
23. X. R. Zhou, Y. M. Shan, Y. Tan, Z. R. Zhang, B. P. Pang, Comparative Analysis of Transcriptome Responses to Cold Stress in *Galeruca daurica* (Coleoptera: Chrysomelidae). *J Insect Sci* **19** (2019).
24. E. Kraffe, Y. Marty, H. Guderley, Changes in mitochondrial oxidative capacities during thermal acclimation of rainbow trout *Oncorhynchus mykiss*: roles of membrane proteins, phospholipids and their fatty acid compositions. *J Exp Biol* **210**, 149-165 (2007).
25. Q. N. Liu *et al.*, An adenine nucleotide translocase (ANT) gene from *Apostichopus japonicus*; molecular cloning and expression analysis in response to lipopolysaccharide (LPS) challenge and thermal stress. *Fish Shellfish Immunol* **49**, 16-23 (2016).
26. J. A. Jost, S. S. Keshwani, J. J. Abou-Hanna, Activation of AMP-activated protein kinase in response to temperature elevation shows seasonal variation in the zebra mussel, *Dreissena polymorpha*. *Comp Biochem Physiol A Mol Integr Physiol* **182**, 75-83 (2015).
27. J. A. Moibi, E. D. Ekpe, R. J. Christopherson, Acetyl-CoA carboxylase and fatty acid synthase activity and immunodetectable protein in adipose tissues of

- ruminants: effect of temperature and feeding level. *J Anim Sci* **78**, 2383-2392 (2000).
28. L. N. Weaver, D. Drummond-Barbosa, The nuclear receptor seven up functions in adipocytes and oenocytes to control distinct steps of *Drosophila* oogenesis. *Dev Biol* **456**, 179-189 (2019).
 29. J. Wang, L. Zeng, Z. Han, An assessment of cold hardiness and biochemical adaptations for cold tolerance among different geographic populations of the *Bactrocera dorsalis* (Diptera: Tephritidae) in China. *J Insect Sci* **14** (2014).
 30. Y. Tian *et al.*, Glucose-6-phosphate dehydrogenase and 6-phosphogluconate dehydrogenase genes of winter wheat enhance the cold tolerance of transgenic *Arabidopsis*. *Plant Physiol Biochem* **161**, 86-97 (2021).
 31. N. Sardesai, C. R. Babu, Poly-beta-hydroxybutyrate metabolism is affected by changes in respiratory enzymatic activities due to cold stress in two psychrotrophic strains of *Rhizobium*. *Curr Microbiol* **42**, 53-58 (2001).
 32. X. Xu, Y. Zhang, M. Liang, W. Kong, J. Liu, The Citrus Laccase Gene CsLAC18 Contributes to Cold Tolerance. *Int J Mol Sci*, 14509 (2022).
 33. J. Karmacharya, P. Shrestha, S. R. Han, H. Park, T. J. Oh, Complete Genome Sequencing of Polar *Arthrobacter* sp. PAMC25284, Copper Tolerance Potential Unraveled with Genomic Analysis. *Int J Microbiol* **2022**, 1162938 (2022).
 34. J. M. Song *et al.*, Genetic and Structural Characterization of a Thermo-Tolerant, Cold-Active, and Acidic Endo- β -1,4-glucanase from Antarctic Springtail, *Cryptopygus antarcticus*. *J Agric Food Chem* **65**, 1630-1640 (2017).
 35. Z. Peng, G. Liu, K. Huang, Cold Adaptation Mechanisms of a Snow Alga *Chlamydomonas nivalis* During Temperature Fluctuations. *Front Microbiol*, 611080 (2021).
 36. Y. Wang *et al.*, Early Stage Adaptation of a Mesophilic Green Alga to Antarctica: Systematic Increases in Abundance of Enzymes and LEA Proteins. *Molecular Biology and Evolution*, 849–863 (2020).
 37. T. Iqbal, S. Chakraborty, S. Murugan, D. Das, Metalloenzymes for Fatty Acid-Derived Hydrocarbon Biosynthesis: Nature's Cryptic Catalysts. *Chem Asian J* **17**, e202200105 (2022).
 38. M. Kim, R. M. Robich, J. P. Rinehart, D. L. Denlinger, Upregulation of two actin genes and redistribution of actin during diapause and cold stress in the northern house mosquito, *Culex pipiens*. *J Insect Physiol* **52**, 1226-1233 (2006).
 39. D. O. Agwunobi *et al.*, DNA Methyltransferases Contribute to Cold Tolerance in Ticks. *Front Vet Sci* **8**, 726731 (2021).
 40. I. Uzelac *et al.*, Effect of Cold Acclimation on Selected Metabolic Enzymes During Diapause in The European Corn Borer *Ostrinia nubilalis* (Hbn.). *Sci Rep* **10**, 9085 (2020).
 41. J. J. Potter, M. E., Y. V.W., The adult enhancer factor-1, a *Drosophila melanogaster* transcriptional repressor, modulates the promoter activity of the rat class-I alcohol dehydrogenase-encoding gene. *Gene* **149**, 325-330 (1994).
 42. K. Kurucz *et al.*, *Aedes koreicus*, a vector on the rise: Pan-European genetic patterns, mitochondrial and draft genome sequencing. *PLoS One* **17**, e0269880 (2022).
 43. F. Montarsi *et al.*, Distribution and habitat characterization of the recently introduced invasive mosquito *Aedes koreicus* [*Hulecoeteomyia koreica*], a new potential vector and pest in north-eastern Italy. *Parasit Vectors* **6**, 292 (2013).

44. H. Li, BFC: correcting Illumina sequencing errors. *Bioinformatics* **31**, 2885-2887 (2015).
45. L. Salmela, E. Rivals, LoRDEC: accurate and efficient long read error correction. *Bioinformatics* **30**, 3506-3514 (2014).
46. M. Kolmogorov, J. Yuan, Y. Lin, P. A. Pevzner, Assembly of long, error-prone reads using repeat graphs. *Nat Biotechnol* **37**, 540-546 (2019).
47. R. Kundu, J. Casey, W. K. Sung, HyPo: Super Fast & Accurate Polisher for Long Read Genome Assemblies.
48. R. L. Warren *et al.*, LINKS: Scalable, alignment-free scaffolding of draft genomes with long reads. *Gigascience* **4**, 35 (2015).
49. L. Coombe *et al.*, LongStitch: high-quality genome assembly correction and scaffolding using long reads. *BMC Bioinformatics* **22**, 534 (2021).
50. D. Guan *et al.*, Identifying and removing haplotypic duplication in primary genome assemblies. *Bioinformatics* **36**, 2896-2898 (2020).
51. A. Mikheenko, A. Prjibelski, V. Saveliev, D. Antipov, A. Gurevich, Versatile genome assembly evaluation with QUAST-LG. *Bioinformatics* **34**, i142-i150 (2018).
52. A. M. Bolger, M. Lohse, B. Usadel, Trimmomatic: a flexible trimmer for Illumina sequence data. *Bioinformatics* **30**, 2114-2120 (2014).
53. S. Andrews, FastQC: a quality control tool for high throughput sequence data. *Babraham Bioinformatics* (2010).
54. E. Bushmanova, D. Antipov, A. Lapidus, A. D. Prjibelski, maSPAdes: a de novo transcriptome assembler and its application to RNA-Seq data. *Gigascience* **8** (2019).
55. R. Patro, G. Duggal, M. I. Love, R. A. Irizarry, C. Kingsford, Salmon provides fast and bias-aware quantification of transcript expression. *Nat Methods* **14**, 417-419 (2017).
56. M. I. Love, W. Huber, S. Anders, Moderated estimation of fold change and dispersion for RNA-seq data with DESeq2. *Genome Biol* **15**, 550 (2014).
57. D. M. Bryant *et al.*, A Tissue-Mapped Axolotl De Novo Transcriptome Enables Identification of Limb Regeneration Factors. *Cell Rep* **18**, 762-776 (2017).
58. U. Consortium, UniProt: the Universal Protein Knowledgebase in 2023. *Nucleic Acids Res* **51**, D523-D531 (2023).
59. E. Y. Chen *et al.*, Enrichr: interactive and collaborative HTML5 gene list enrichment analysis tool. *BMC Bioinformatics* **14**, 128 (2013).
60. C. Holt, M. Yandell, MAKER2: an annotation pipeline and genome-database management tool for second-generation genome projects. *BMC Bioinformatics* **12**, 491 (2011).
61. I. Korf, Gene finding in novel genomes. *BMC Bioinformatics* **5**, 59 (2004).
62. M. Stanke, O. Schöffmann, B. Morgenstern, S. Waack, Gene prediction in eukaryotes with a generalized hidden Markov model that uses hints from external sources. *BMC Bioinformatics* **7**, 62 (2006).
63. M. Tarailo-Graovac, N. Chen, Using RepeatMasker to identify repetitive elements in genomic sequences. *Curr Protoc Bioinformatics* **Chapter 4**, 4.10.11-14.10.14 (2009).
64. P. Jones *et al.*, InterProScan 5: genome-scale protein function classification. *Bioinformatics* **30**, 1236-1240 (2014).
65. D. M. Emms, S. Kelly, OrthoFinder: solving fundamental biases in whole genome comparisons dramatically improves orthogroup inference accuracy. *Genome Biol* **16**, 157 (2015).

66. I. Letunic, P. Bork, Interactive Tree Of Life (iTOL) v5: an online tool for phylogenetic tree display and annotation. *Nucleic Acids Res* **49**, W293-W296 (2021).
67. E. M. Gertz, Y. K. Yu, R. Agarwala, A. A. Schäffer, S. F. Altschul, Composition-based statistics and translated nucleotide searches: improving the TBLASTN module of BLAST. *BMC Biol* **4**, 41 (2006).

Figures and Tables

Figure 1. Quality assessment of the two de novo genome assembly using Benchmarking Universal Single-Copy Orthologs (BUSCO). Evaluation summary for the genome assembly of *Ae. koreicus* (A) and *Ae. japonicus* (B) is shown with the levels of complete, fragmented, and missing gene features.

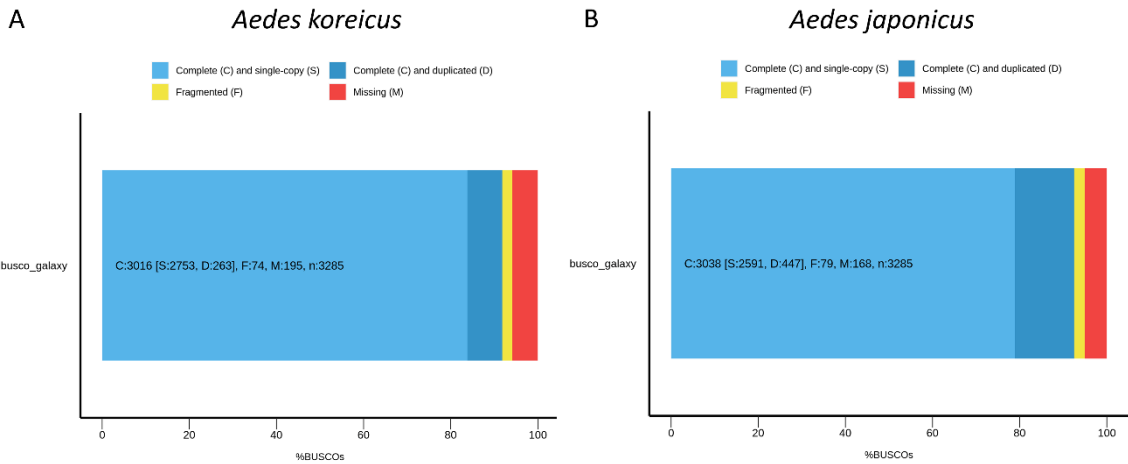


Figure 2. Phylogenetic analysis of the newly assembled *Ae. koreicus* and *Ae. japonicus* genomes in comparison to known mosquito species. *Drosophila melanogaster* was used as outgroup. Bootstrap values are shown at each branch.

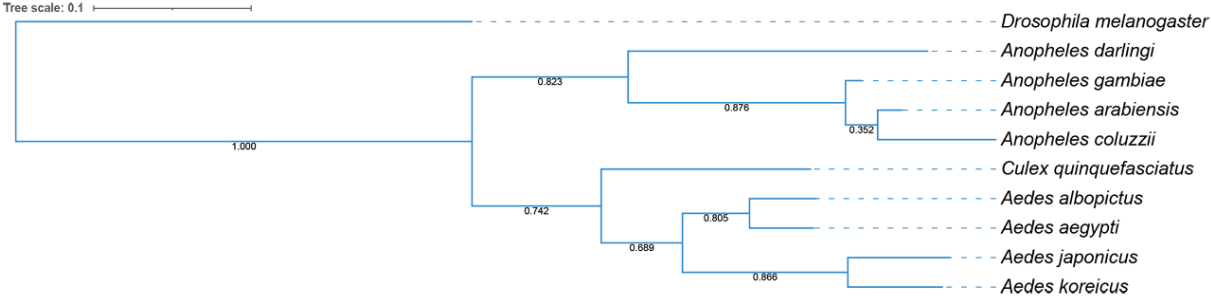


Figure 3. Convergence analysis of genes involved in thermal adaptation (A) and insecticide resistance (B). Venn diagrams show species-specific (unique) or shared genes among *Ae. koreicus*, *Ae. japonicus*, *Ae. aegypti* and *Ae. albopictus* mosquitoes. Thermal adaptation genes refer to *Drosophila melanogaster* and detected by homology-based search in the mosquito genomes. Insecticide resistance genes refer to *Ae. aegypti* and detected with BLAST in the genomes of *Ae. koreicus*, *Ae. japonicus* and *Ae. albopictus*.

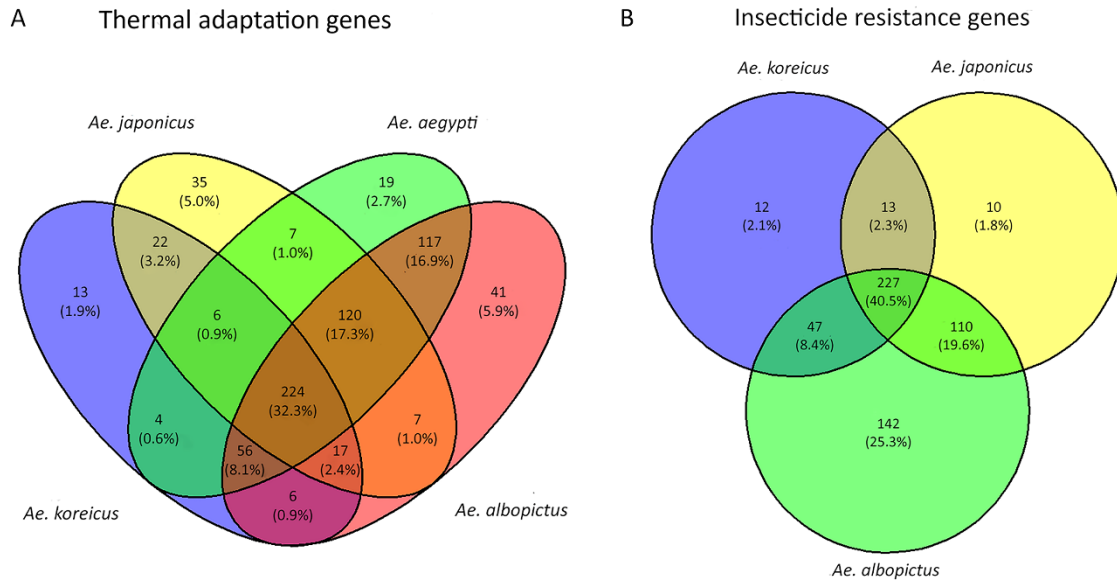


Figure 4. Analysis of differentially expressed genes in larvae and adults of *Ae. koreicus* and *Ae. japonicus* following thermal adaptation. Volcano plots comparing transcripts obtained by samples reared at 15°C and 28°C (control group): upregulated (red), downregulated (blue) and not significantly altered (grey) transcripts are shown in *Ae. koreicus* larvae (A), *Ae. koreicus* adults (B), *Ae. japonicus* larvae (C) and *Ae. japonicus* adults (D) respectively.

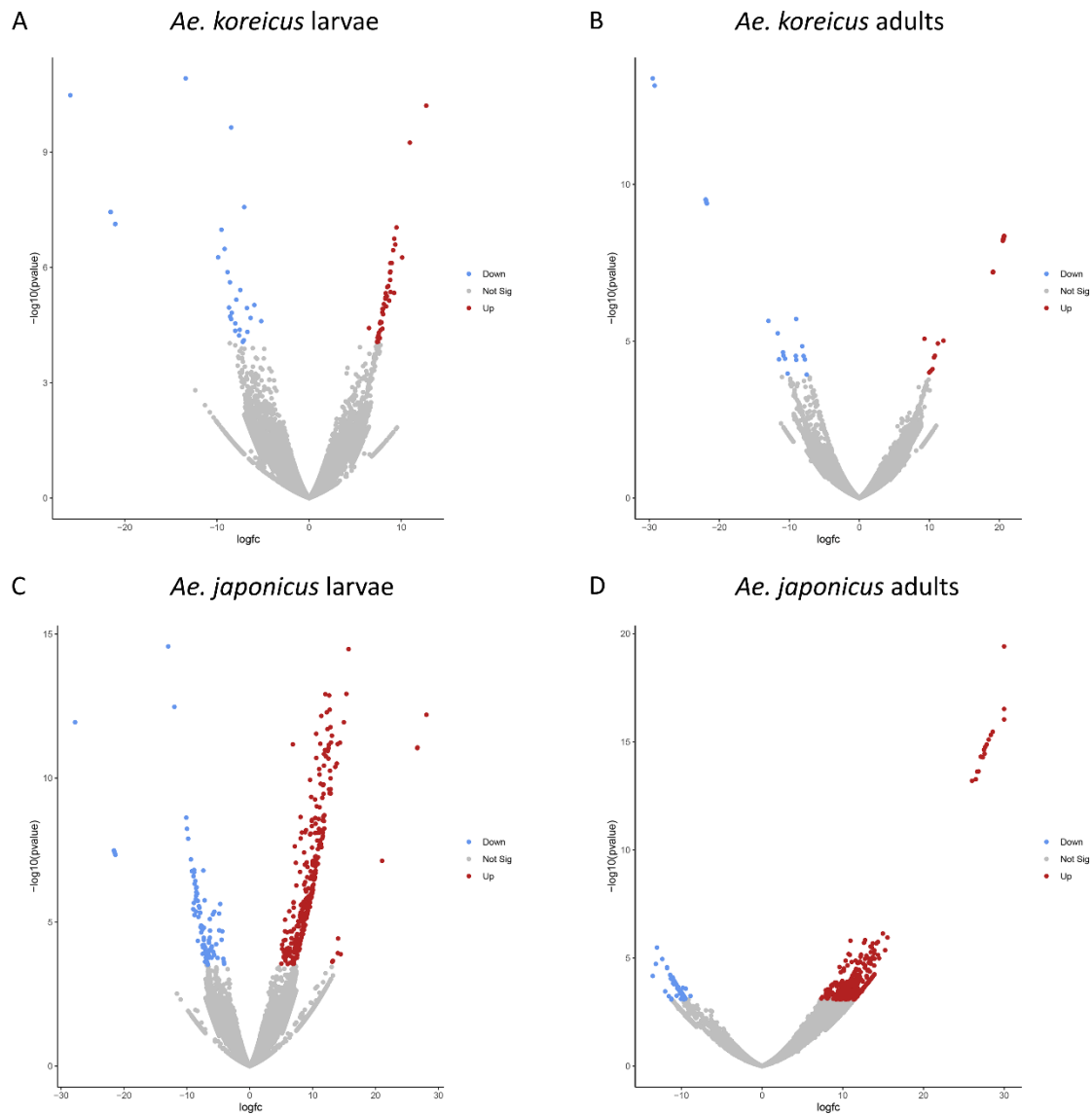


Table 1. Main genome features of *Ae. koreicus* and *Ae. japonicus*. *Determined by QUAST;
 Determined by RepeatMasker; * Determined by MAKER.

Metrics	<i>Aedes koreicus</i>	<i>Aedes japonicus</i>
Assembly size	1.24 Gbp	1.39 Gbp
N50*	190,716 bp	118,241 bp
Number of scaffolds	21,315	25,255
GC% content	39.68%	39.51%
Repetitive elements**	71.92%	71.00%
Genes predicted***	18,647	18,687

Table 2. Genes differentially expressed in larvae and adults of *Ae. japonicus* and *Ae. koreicus* reared at 15°C.

Shared genes in larvae and adults of <i>Aedes japonicus</i>					
Gene Symbol	Protein name	Log2FC larvae	p-adjusted larvae	Log2FC adults	p-adjusted adults
<i>aapo1</i>	Alanine/arginine aminopeptidase	11.656	2.790e-07	10.181	4.440e-02
<i>abaq</i>	Quinolone resistance transporter	12.385	2.790e-08	13.691	8.400e-03
<i>aca13</i>	Putative calcium-transporting ATPase 13, plasma membrane-type	9.773	1.510e-04	11.425	4.970e-02
<i>acbp4</i>	Acyl-CoA-binding domain-containing protein 4	10.950	2.947e-06	9.561	4.890e-02
<i>acoB</i>	Acetoin:2,6-dichlorophenolindophenol oxidoreductase subunit beta	12.634	1.826e-09	12.130	4.190e-02
<i>acr</i>	Acrosin	12.487	2.510e-08	8.841	4.930e-02
<i>adhT</i>	Alcohol dehydrogenase	11.809	3.403e-08	11.759	4.620e-02
<i>aef1</i>	Adult enhancer factor 1	5.163	1.248e-02	10.375	3.780e-02
<i>aes</i>	Amino-terminal enhancer of split	12.574	2.158e-08	10.135	4.100e-02
<i>afg2</i>	ATPase family gene 2 protein	11.695	2.670e-06	11.511	4.870e-02
<i>aglA</i>	Probable alpha-glucosidase	12.723	4.090e-09	12.255	2.950e-02
<i>aldh9a1a</i>	Aldehyde dehydrogenase family	8.228	7.420e-03	12.342	4.090e-02
<i>aspC</i>	Aspartate aminotransferase	12.723	4.090e-09	10.232	3.480e-02
<i>baiA</i>	3alpha-hydroxysteroid dehydrogenase	10.742	1.159e-05	10.163	4.090e-02

<i>cyp72a613</i>	Cytochrome P450 CYP72A613	6.693	4.920e-03	11.863	4.510e-02
<i>cyp72a616</i>	Cytochrome P450 CYP72A616	12.842	8.839e-09	11.863	4.510e-02
<i>ksdD</i>	3-oxosteroid 1-dehydrogenase	9.216	1.220e-03	13.266	3.190e-02
<i>acr</i>	Acrosin	-5.629	1.300e-03	-10.732	3.229e-02
<i>aef1</i>	Adult enhancer factor 1	-8.494	3.000e-04	-9.639	4.840e-02
<i>ab</i>	Protein abrupt	-12.959	1.129e-10	-9.678	4.710e-02
Shared genes in larvae and adults of <i>Aedes koreicus</i>					
Gene Symbol	Protein name	Log2FC larvae	p-adjusted larvae	Log2FC adults	p-adjusted adults
<i>aef1</i>	Adult enhancer factor 1	20.775	1.580e-04	20.580	3.287e-06