

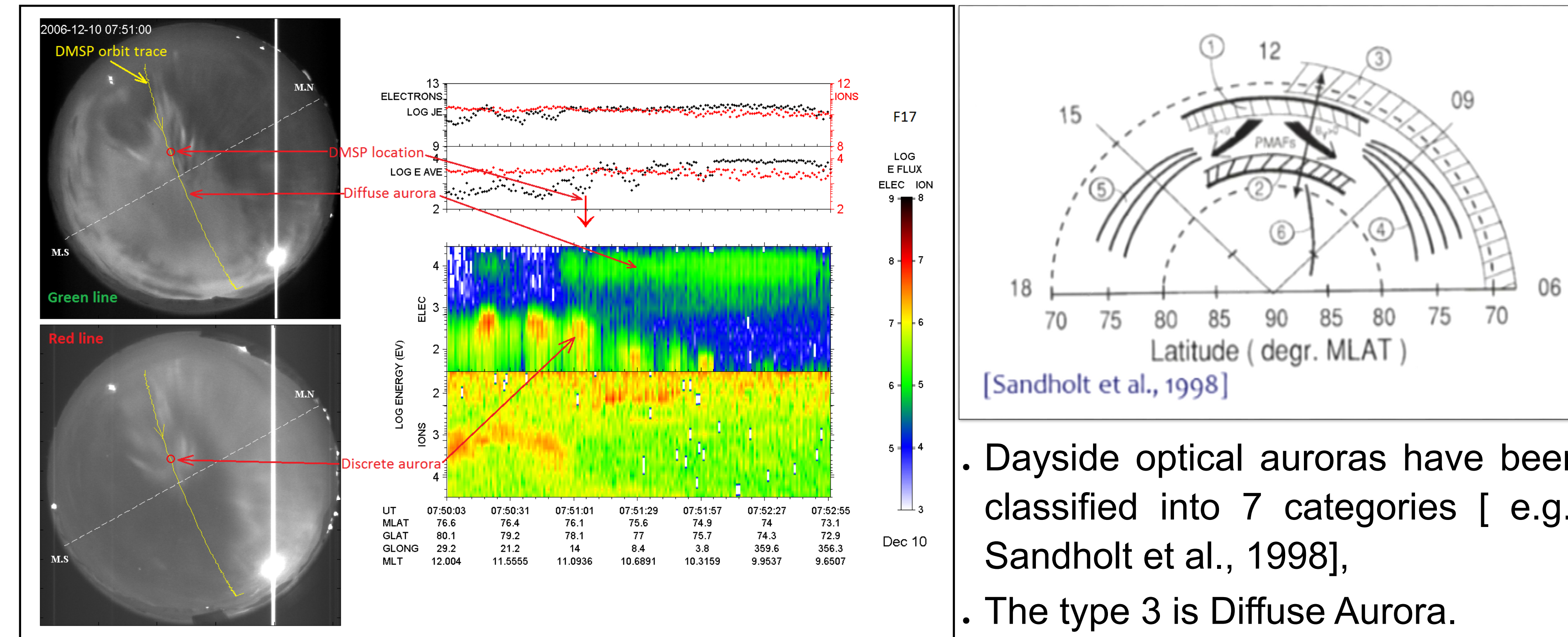
Dayside magnetospheric interactions inferred from dayside diffuse aurora and throat aurora

Desheng Han, *School of Ocean and Earth Science, Tongji University, Shanghai, China* (handesheng@tongji.edu.cn)

Introduction

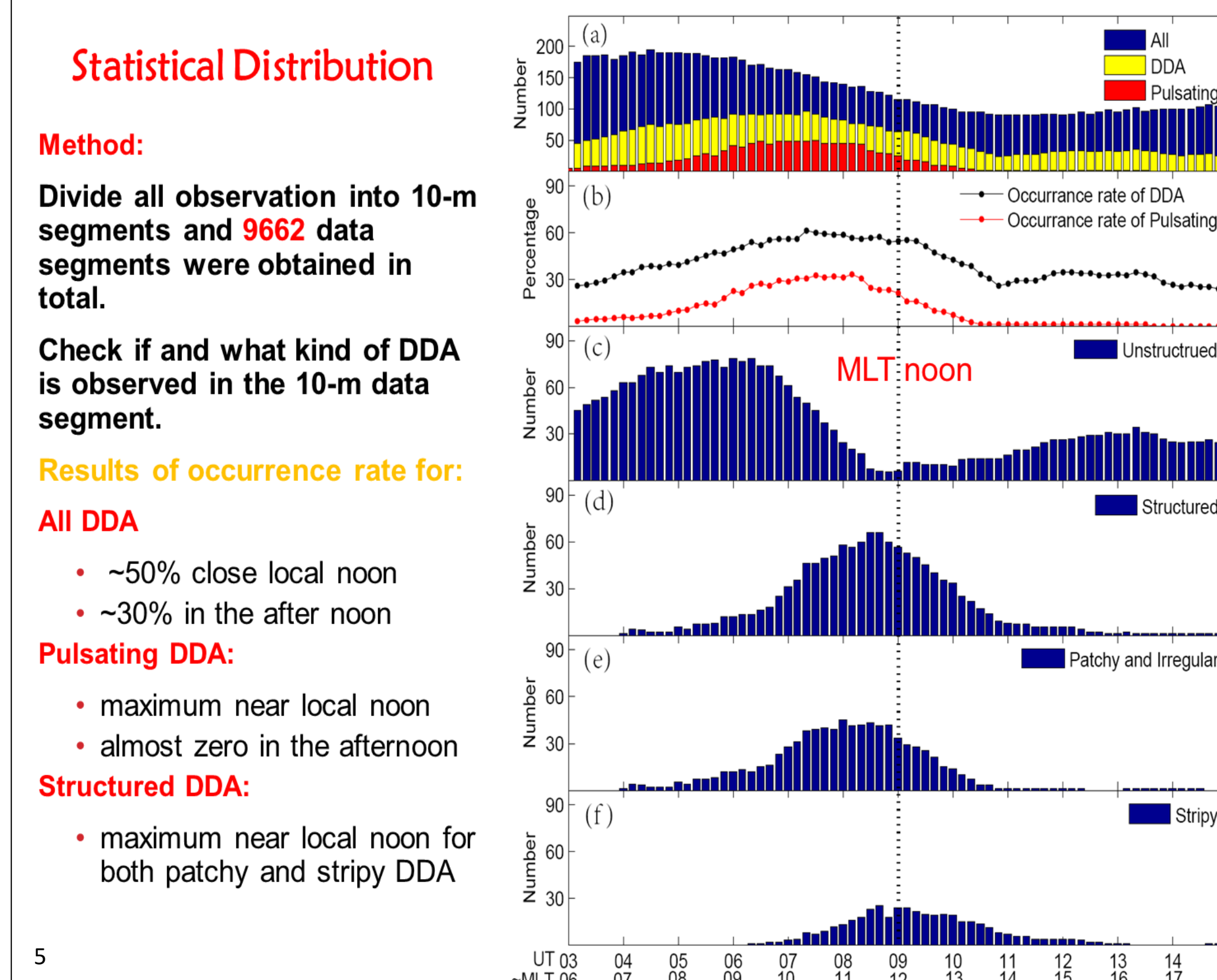
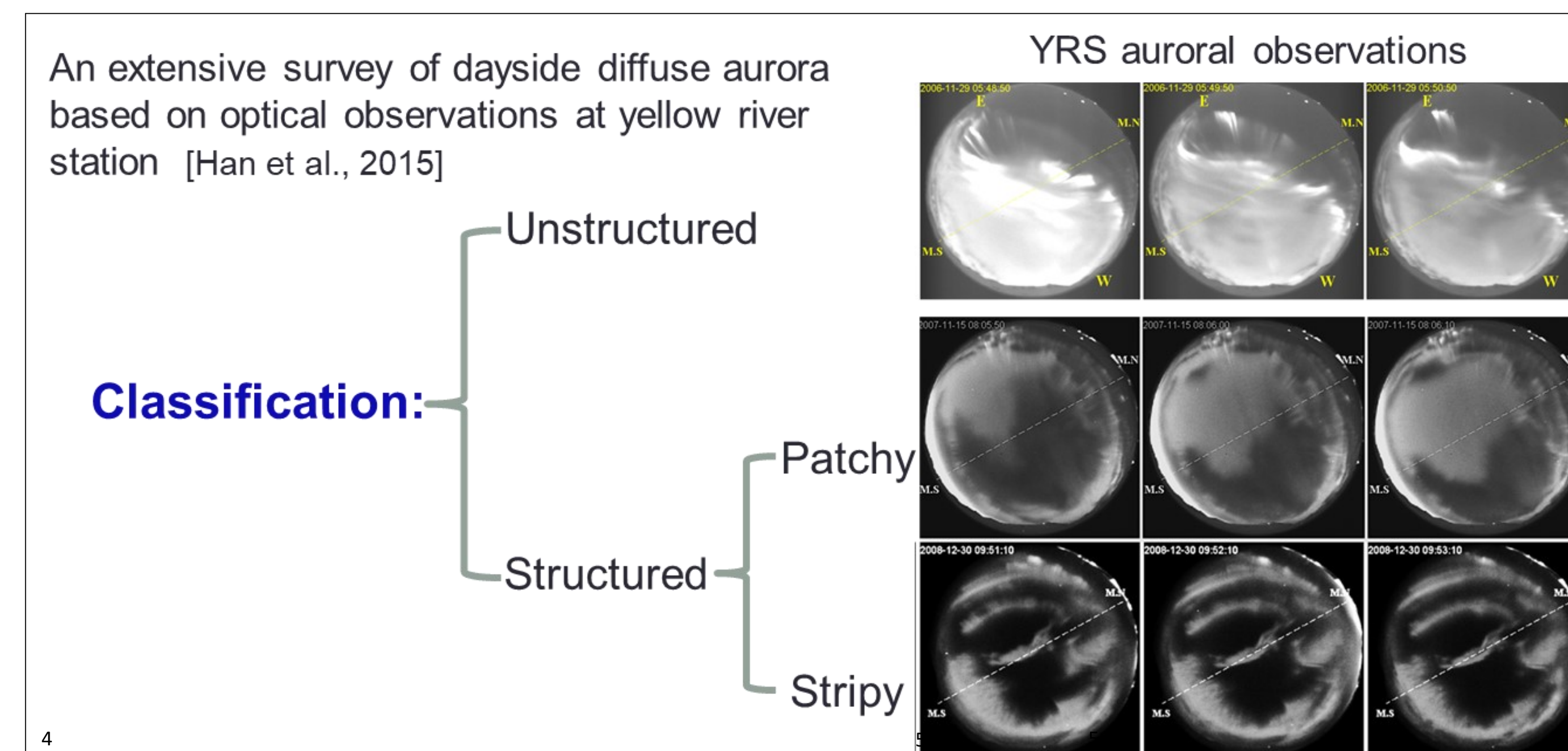
- Optical aurora can be classified into **discrete** and **diffuse** auroras.
- Diffuse aurora mainly occur on the nightside. Occurrence of diffuse aurora on the dayside has been early noticed, but detailed studies on **Dayside Diffuse Aurora (DDA)** are rare.
- We carried out a systematic study on DDA and classified them into **unstructured** and **structured** DDAs, which reflect important physical processes in the dayside outer magnetosphere.
- During study on DDA, we defined a new auroral form, called **Throat aurora**.
- We found that throat auroras correspond to localized magnetopause indentations and have high occurrence rate, so they are important for understanding solar wind-magnetosphere coupling.
- Studies on throat aurora suggest that magnetosheath high-speed jets may frequently impact on the magnetopause and cause the magnetopause indentations by triggering reconnections.

Background for dayside diffuse aurora (DDA)



Data: All-sky camera observations at Yellow River Station from 2003

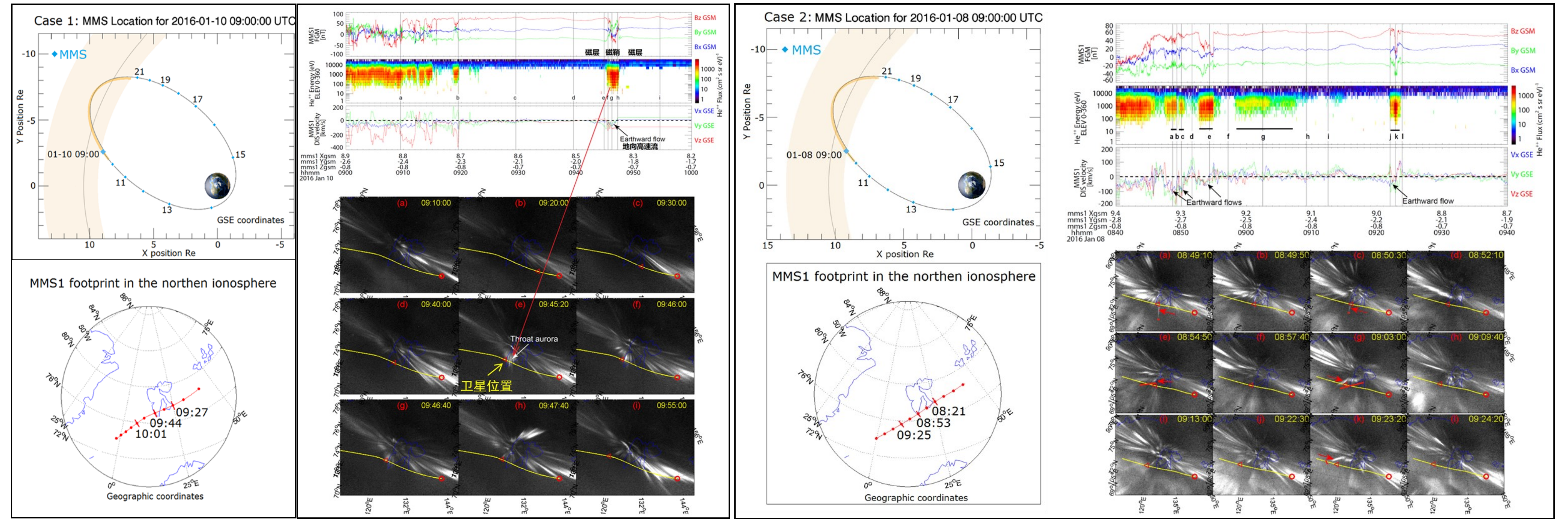
Classification



Summary:

- Classification:** Dayside diffuse aurora can be classified into: unstructured and structured.
- Distribution:** Unstructured DDAs predominantly occur in the morning and afternoon. Structured DDAs predominantly occur near local noon.
- Implications:** DDA structures reflect cold plasma structures in the dayside outer magnetosphere.

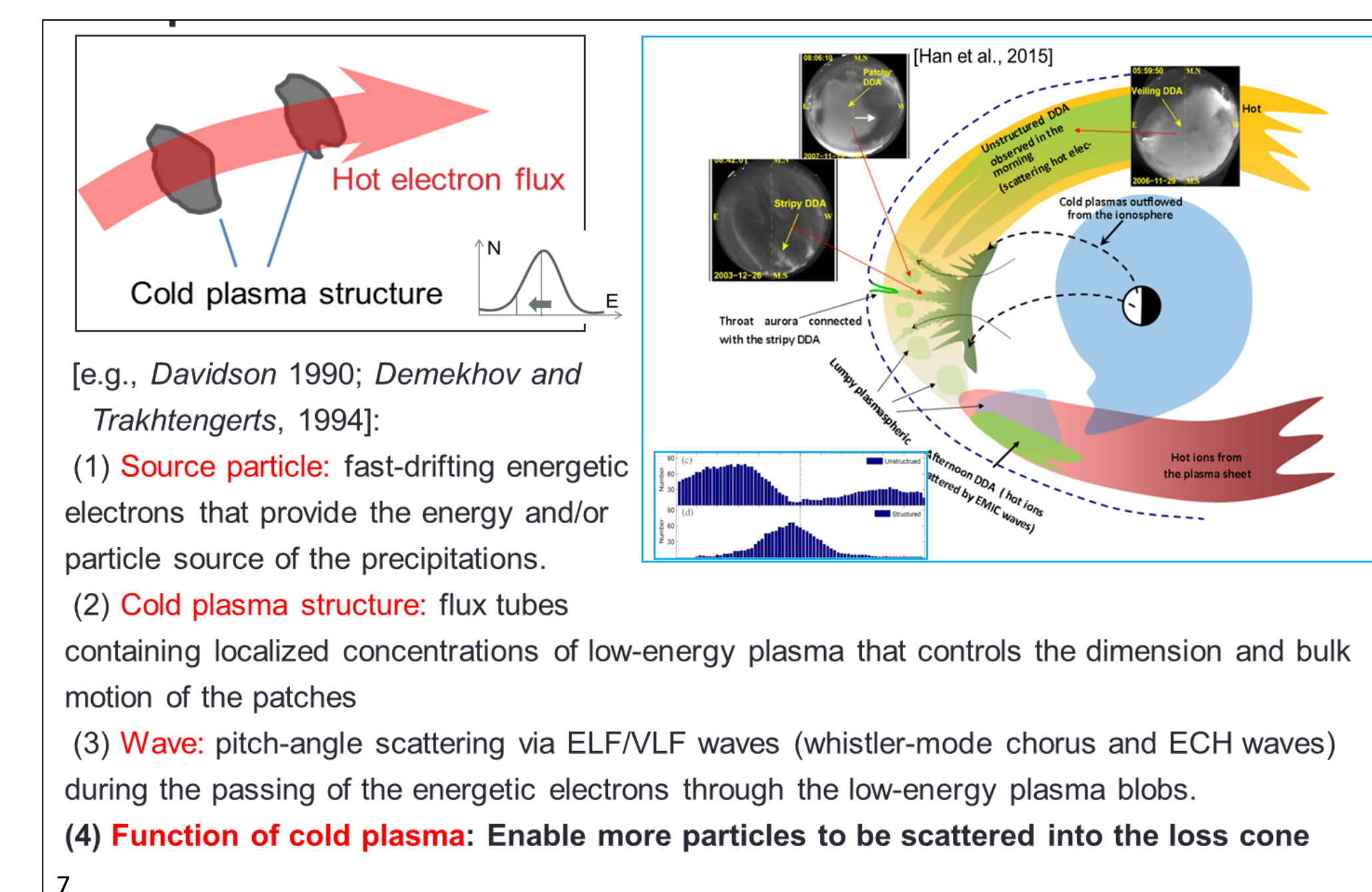
Direct evidence for throat aurora corresponding to magnetopause indentations [Han et al., 2018]



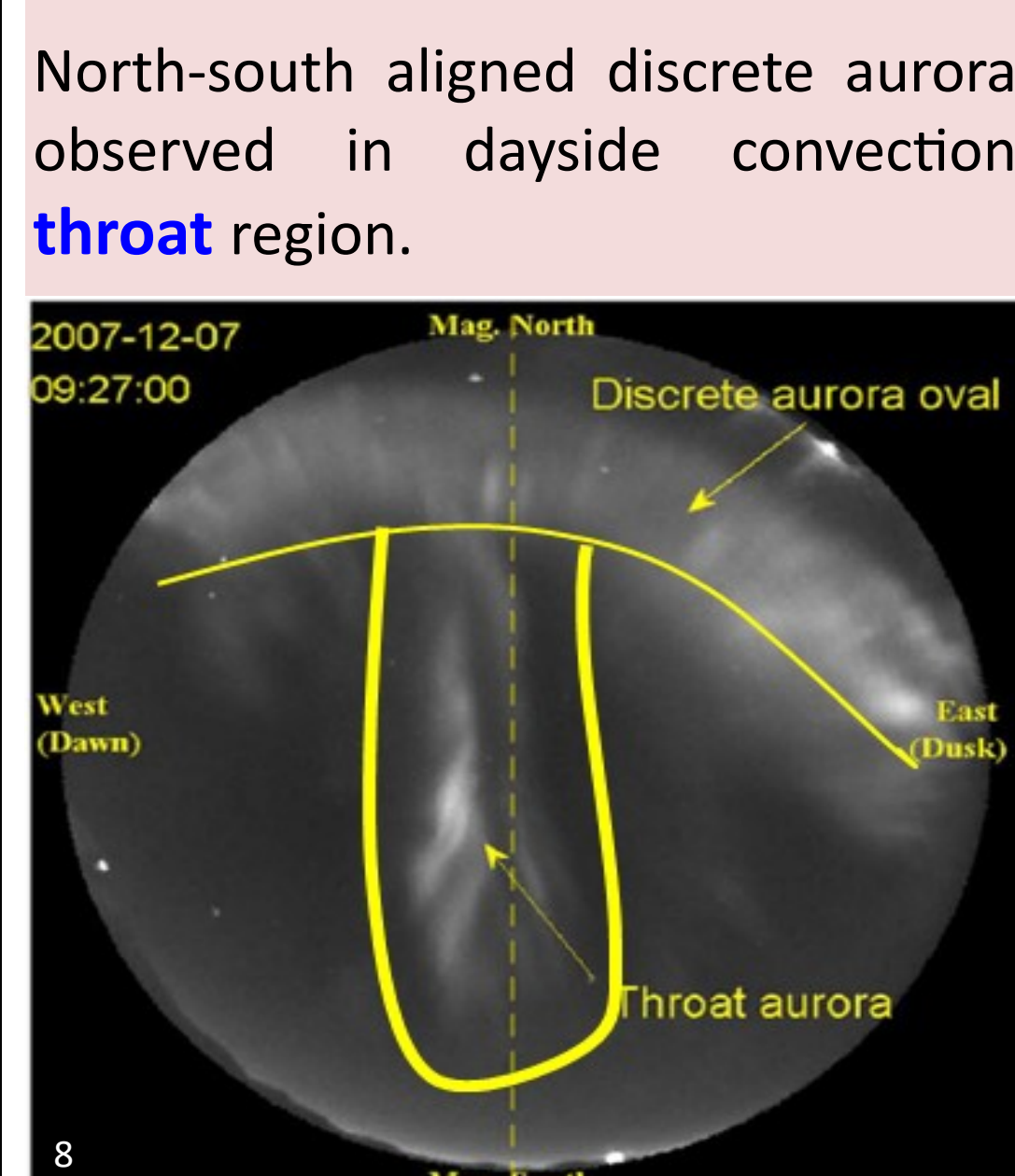
Summary:

- Throat auroras **correspond to magnetopause indentations**.
- Throat aurora has **high occurrence rate and can be in large scale**.
- Observational results of throat aurora imply that: Some transients, such as high-speed jets, locally generated in the magnetosheath (but not from the solar wind), may frequently impact on the subsolar magnetopause, cause magnetopause indentations, trigger reconnections, and lead to a series of effects in Geospace.
- How the throat auroras are generated is not clear yet.**

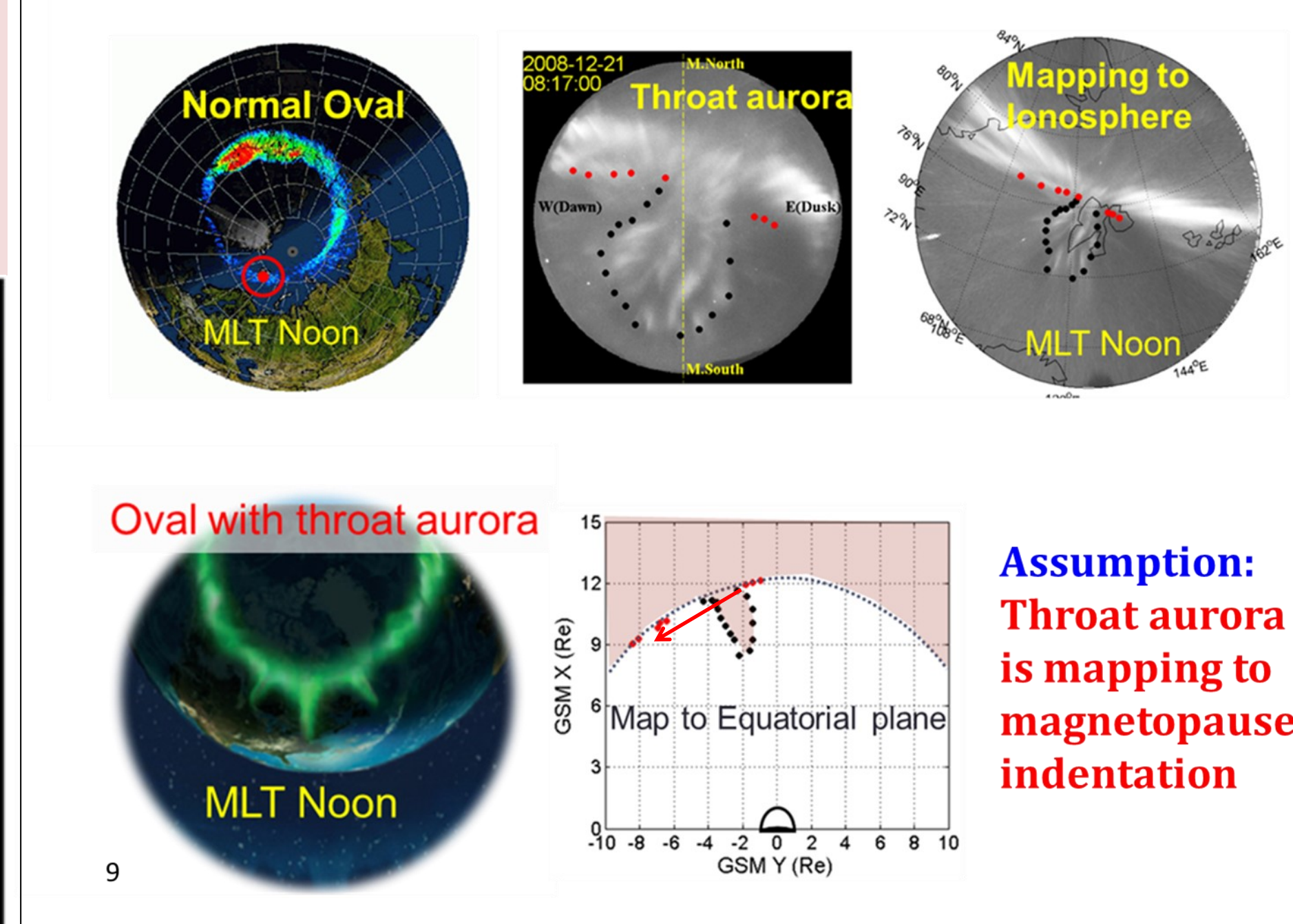
Explanations



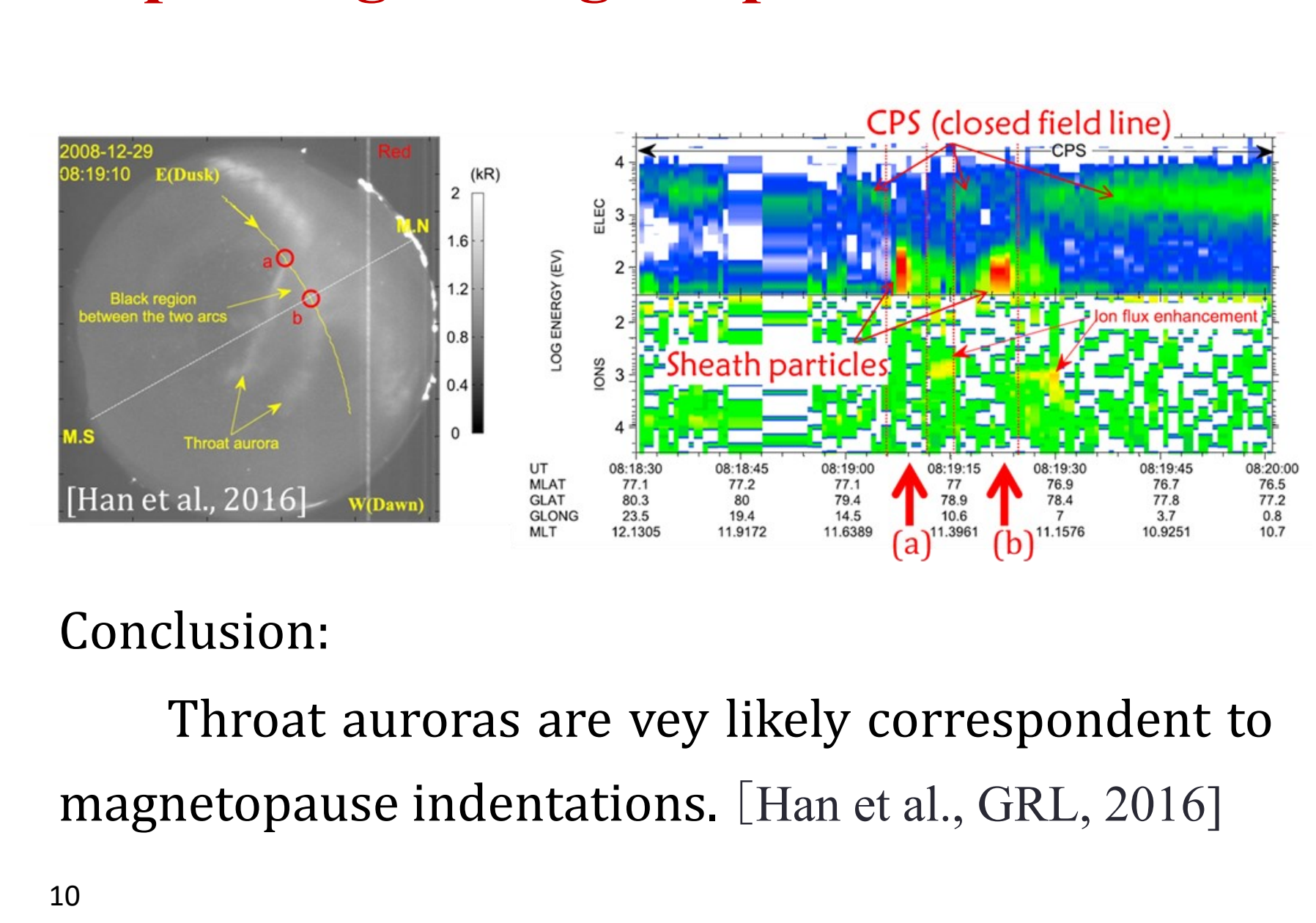
A New Finding Throat aurora



What's new about throat aurora?

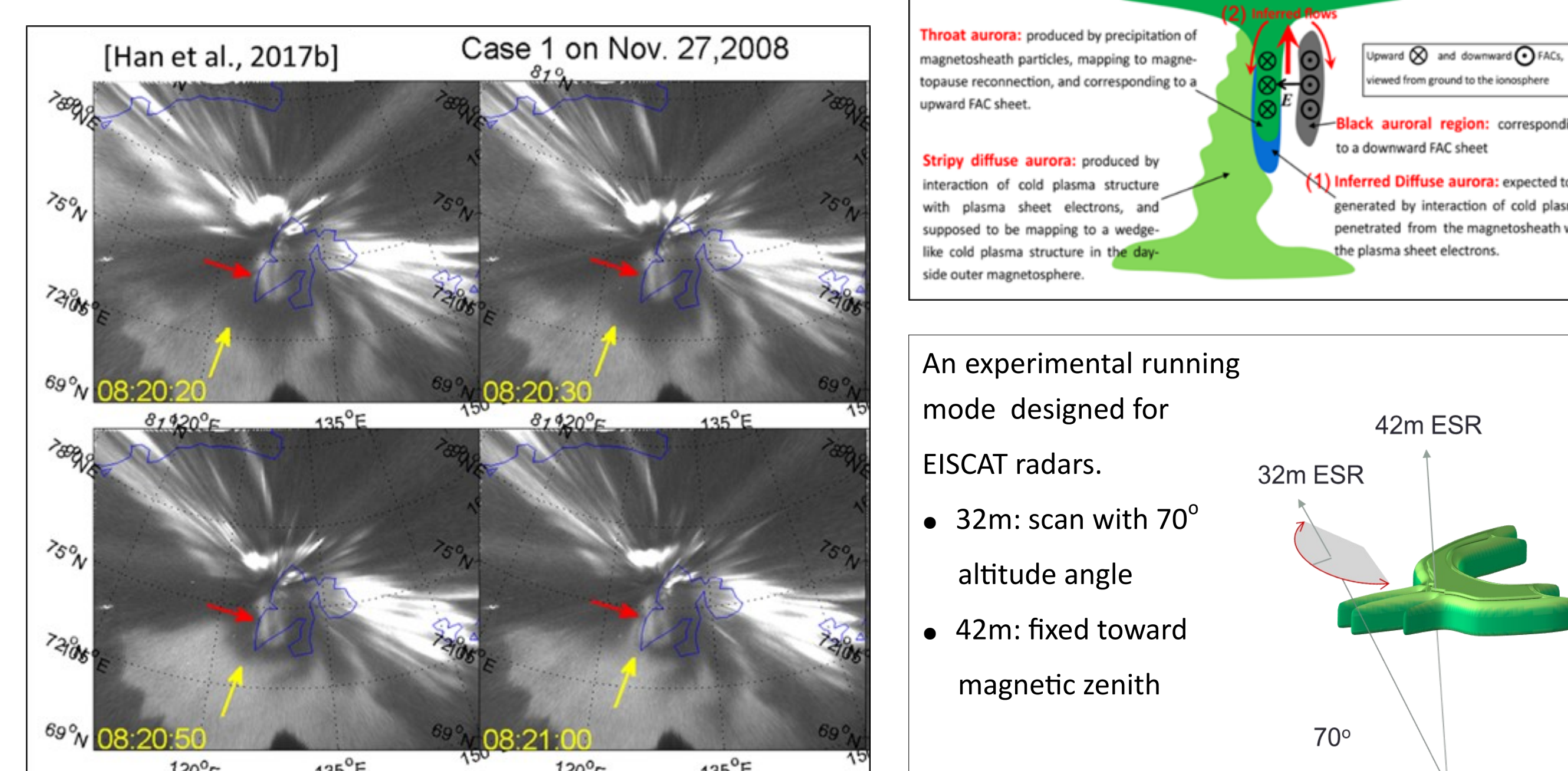


Indirect Evidence for throat aurora corresponding to magnetopause indentation

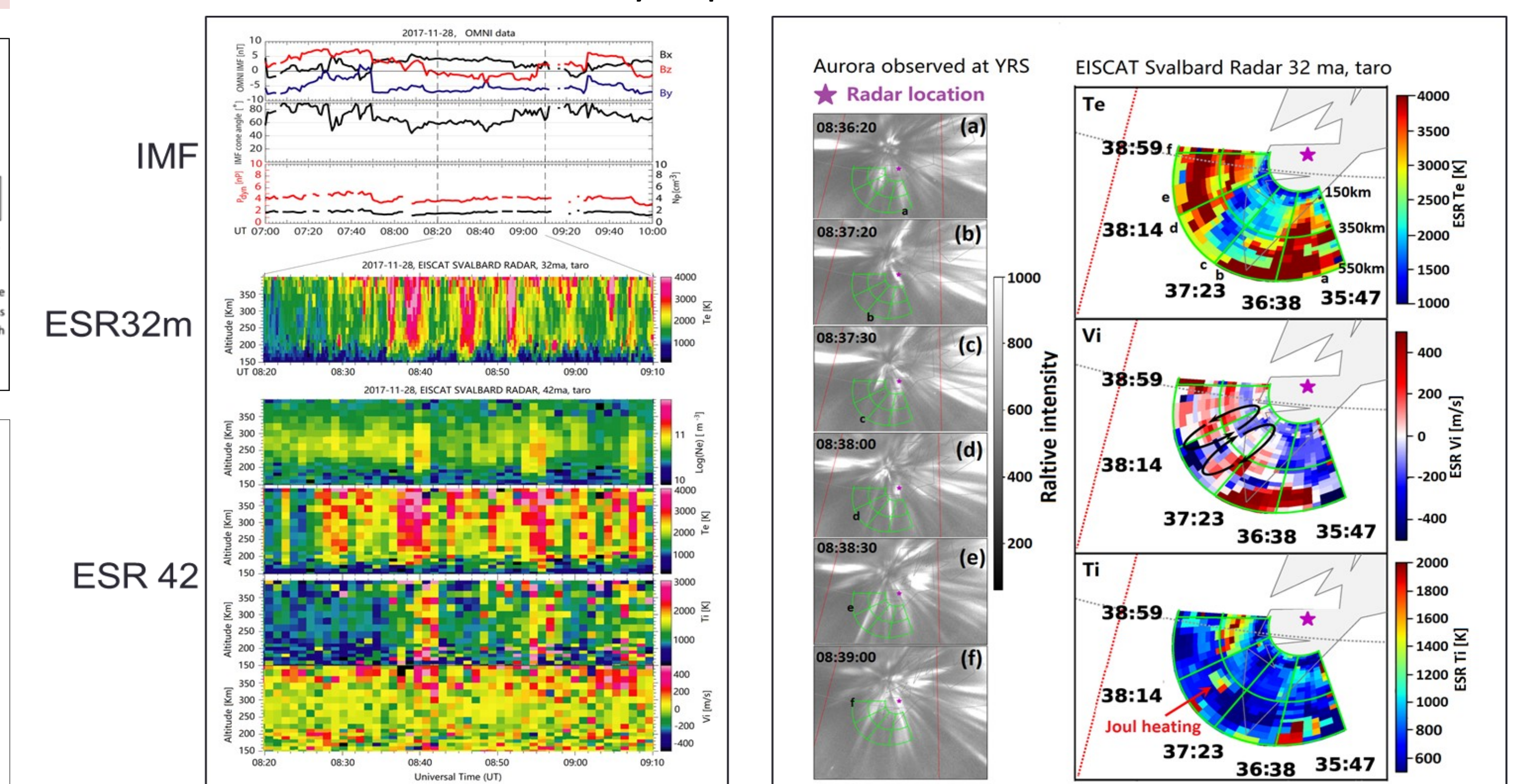


Some other works about throat aurora

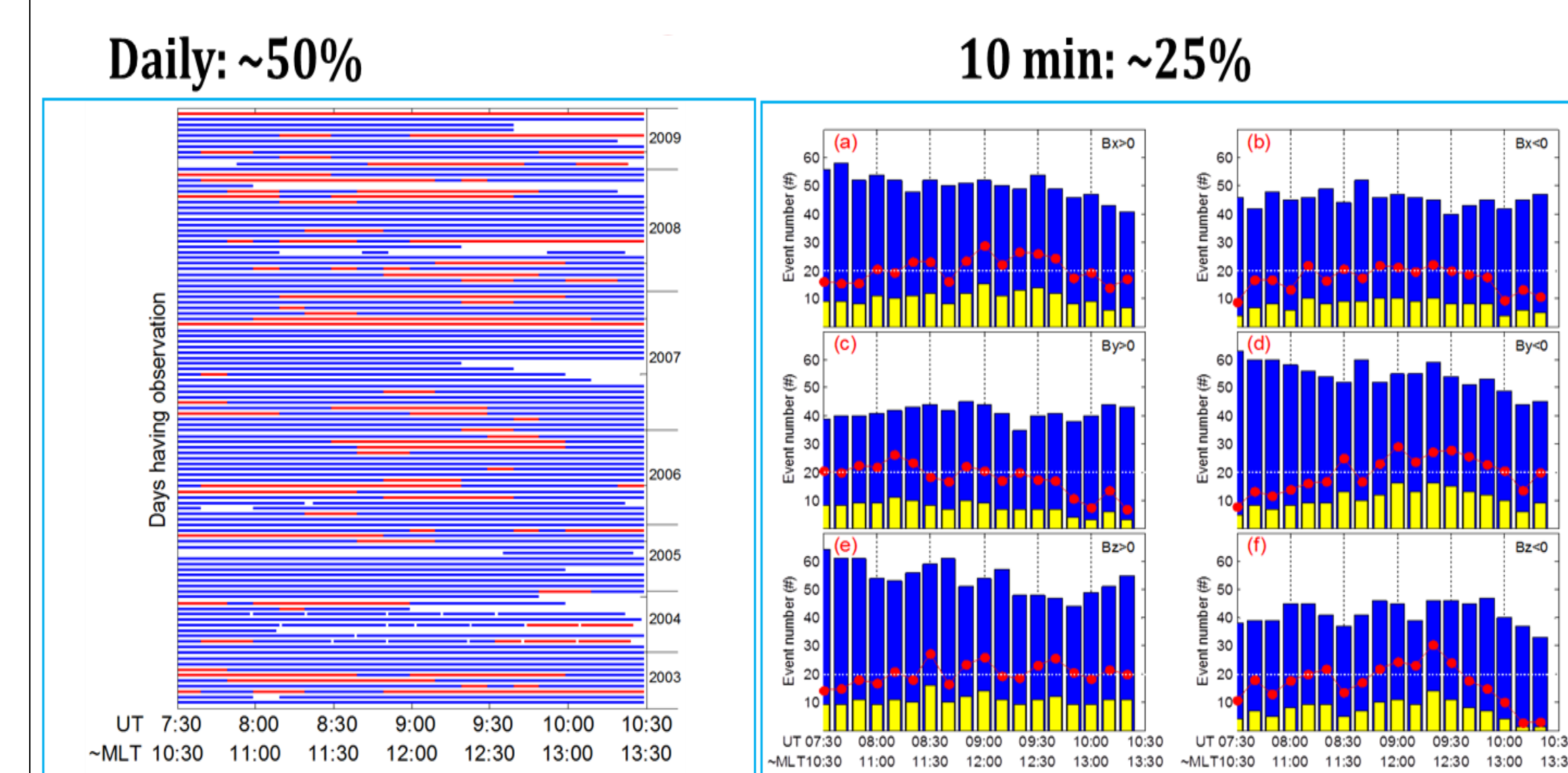
- A new type of diffuse aurora that is associated with throat aurora



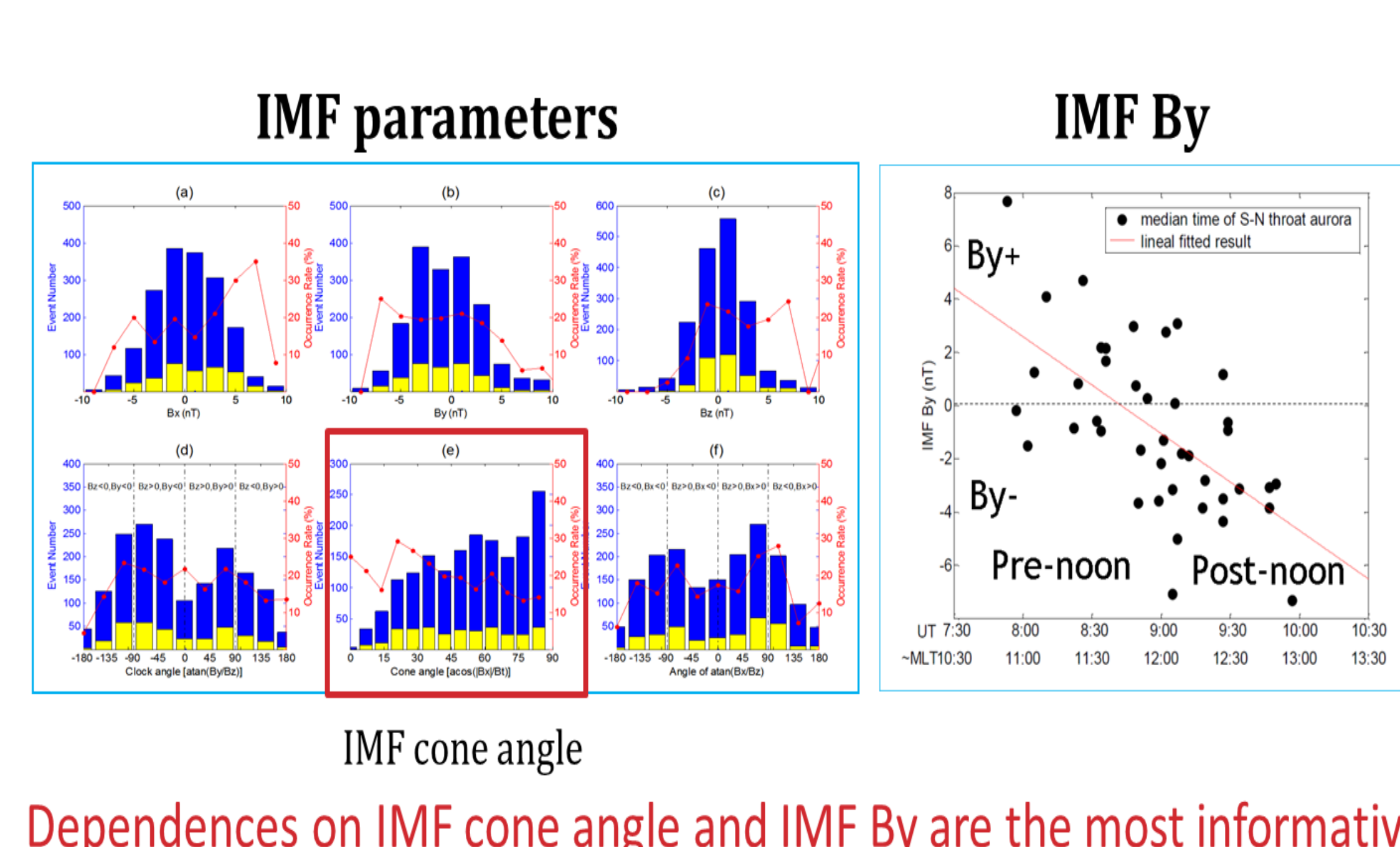
- Ionospheric flow cells, Joule heating, and ion upflow associated with throat aurora that confirmed by experimental EISCAT observations.



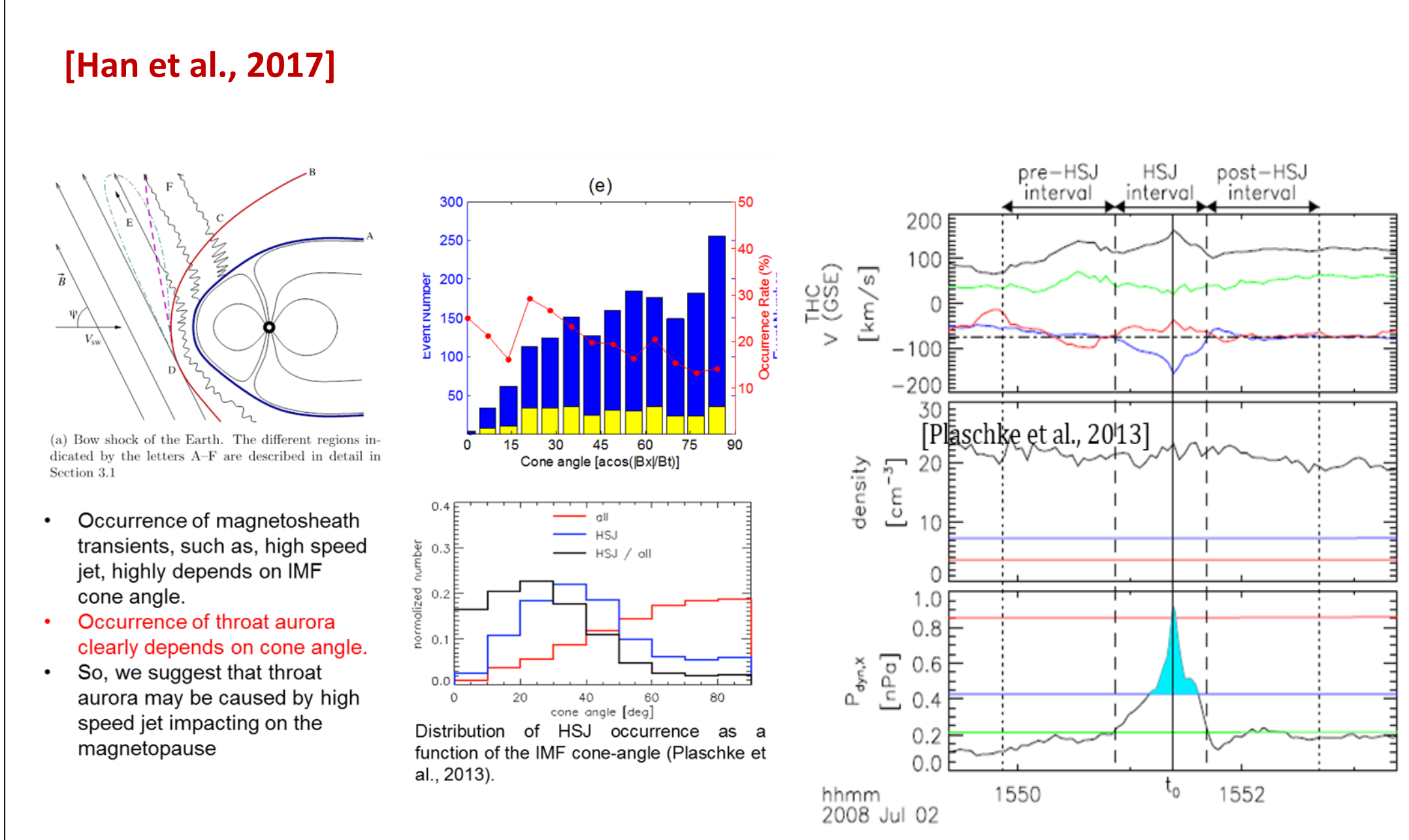
Do they often occur?



How do they depend on the IMF?



Generation of throat aurora should be related with high-speed jets impacting on the magnetopause



References:

- Han et al., (2018). Direct evidence for throat aurora being the ionospheric signature of magnetopause transient and reflecting localized magnetopause indentations. *Journal of Geophysical Research: Space Physics*, 123. <https://doi.org/10.1002/2017JA024945> [Highlight]
- Han et al. (2017). Observational properties of dayside throat aurora and implications on the possible generation mechanisms, *J. Geophys. Res. Space Physics*, 122, doi:10.1002/2016JA023394. [Cover image]
- Han et al., (2015). An extensive survey of dayside diffuse aurora based on optical observations at Yellow River Station, *J. Geophys. Res. Space Physics*, 120, doi:10.1002/2015JA021699. [Cover image]
- Han et al., (2016). Throat aurora: The ionospheric signature of magnetosheath particles penetrating into the magnetosphere, *Geophys. Res. Lett.*, 43, doi:10.1002/2016GL068181.
- Han et al., (2017). Coordinated observations of two types of diffuse auroras near magnetic local noon by Magnetospheric Multiscale mission and ground all-sky camera, *Geophys. Res. Lett.*, 44, doi:10.1002/2017GL074447
- Chen et al., (2017). Dynamic Properties of Throat Aurora Revealed by Simultaneous Ground and Satellite Observations, *J. Geophys. Res. Space Physics*, DOI:10.1002/2016JA023033.

The occurrence rate is rather high.

Dependences on IMF cone angle and IMF By are the most informative.